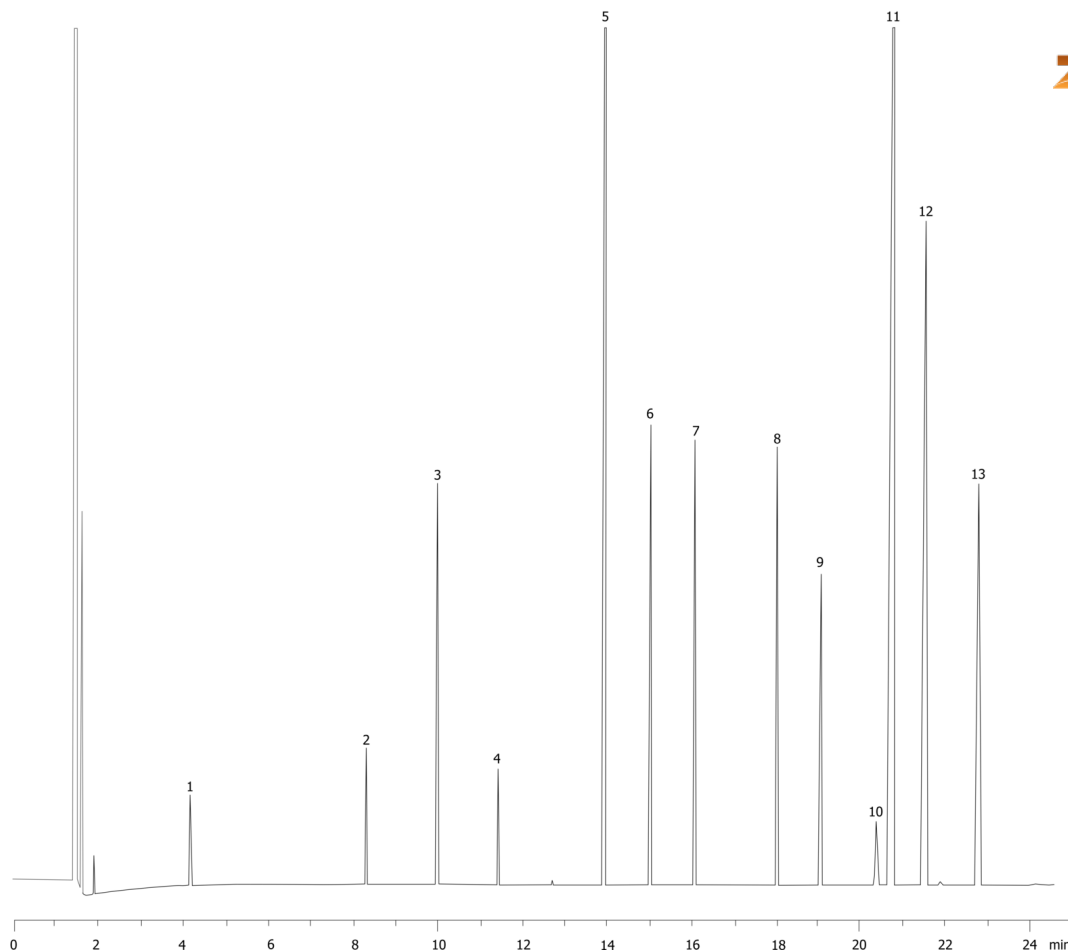


Saw Palmetto Berry (Fatty Acid Methyl Esters)**Column:** Zebron[™] ZB-WAX, GC Cap. Column 30 m x 0.32 mm x 0.25 µm, Ea**Phase:** Polyethylene Glycol (PEG)**Dimensions:** 30 meters x 0.32 mm x 0.25 µm**Order No:** 7HM-G007-11**Oven Profile:** 70Å°C for 5 min 200Å°C for 18 min 200Å°C for 28 min**Carrier Gas:** Constant Flow Helium, 1 mL/min**Injection:** Split 50.0000000000:1 0 µL @ 230°C**Detection:** Refractive Index (250°C)

1068

**Products used in this application:**

Saw Palmetto Berry (Fatty Acid Methyl Esters)

ANALYTES:

- 1 Caproic acid
- 2 Caprylic acid
- 3 Nonanoic acid
- 4 Capric acid
- 5 Lauric acid
- 6 Tridecanoic acid
- 7 Myristic acid
- 8 Palmitic acid
- 9 Heptadecanoic acid
- 10 Stearic acid
- 11 Oleic acid
- 12 Linoleic acid
- 13 Linolenic acid

