

## Increase Sample Through-put - Figure 2a

**Column:** Luna® 3 µm C18(2) 100 Å, LC Column 20 x 4 mm, Ea

**Dimensions:** 20 x 4 mm ID

**Order No:** 00M-4251-D0

**Elution Type:** Isocratic

**Eluent A:** Water w/0.1% ammonium hydroxide

**Eluent B:** Acetonitrile w/0.1% ammonium hydroxide

Gradient Profile:	Step No.	Time (min)	Pct A	Pct B
1	0	80	20	

**Flow Rate:** 2 mL/min

**Col. Temp.:** 25 °C

**Detection:** Refractive Index @ 0.0000000000 (ambient)

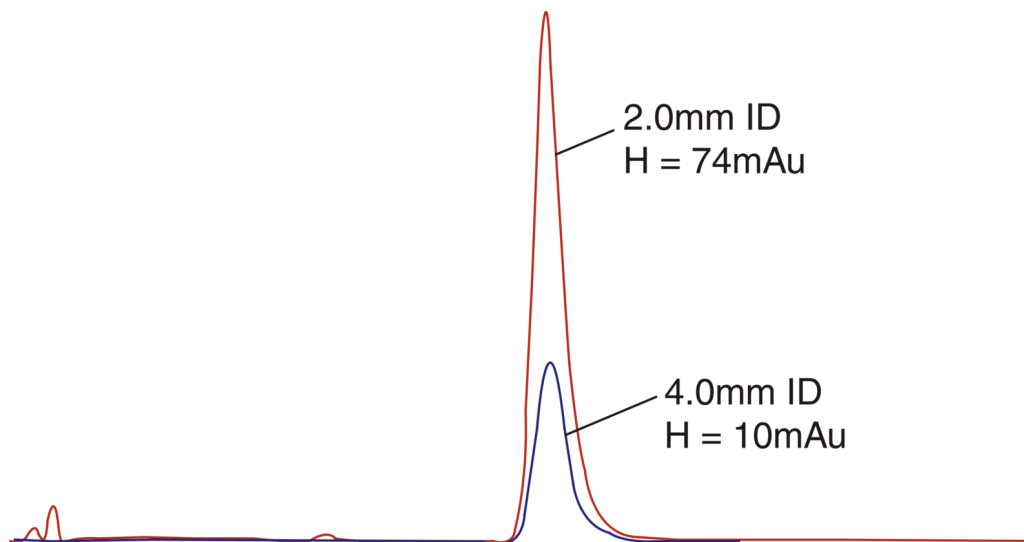
**Analyst Note:** SecurityGuard™ Guard Cartridge System extends column lifetime.

- SecurityGuard Cartridges, C18 4 x 3.0mm, 10/Pk Part No.: AJ0-4287

- Holder Part No.: KJ0-4282



Products used in this application:



### ANALYTES:

1 Pindolol

