

Hydroxyphenyl-5-phenyl-hydantoin

Column: Chirex® (S)-LEU and (R)-NEA, LC Column 250 x 4.6 mm, Ea

Dimensions: 250 x 4.6 mm ID

Order No: 00G-3020-E0

Elution Type: Isocratic

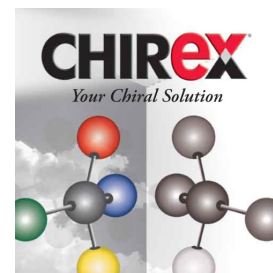
Eluent A: Unknown

| Gradient | Step No. | Time (min) | Pct A |
|----------|----------|------------|-------|
| Profile: | 1 | 0 | 100 |

Flow Rate: 1 mL/min

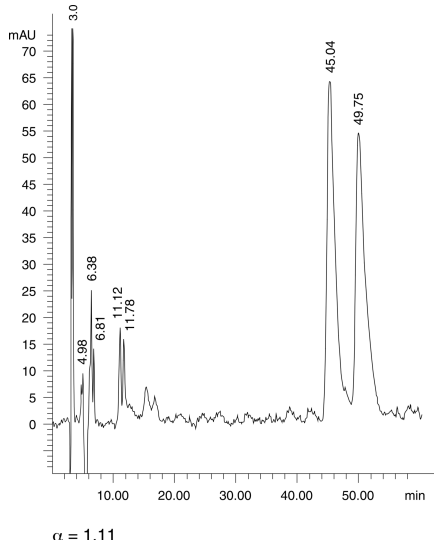
Col. Temp.: ambient

Detection: Refractive Index @ 0.0000000000 (ambient)



Products used in this application:

CHIREX



ANALYTES:

- 1 Hydroxyphenyl-5-phenyl-hydantoin

Retention Time: 45.04 min

- 2 Hydroxyphenyl-5-phenyl-hydantoin

Retention Time: 49.75 min

