

HPLC Application

ID No.: 13750

DOPA [3-(3,4-dihydroxyphenyl)-alanine]

Column: Chirex® 3126 (D)-penicillamine, LC Column 150 x 4.6 mm, Ea

Dimensions: 150 x 4.6 mm ID

Order No: 00F-3126-E0

Elution Type: Isocratic

Eluent A: 2 mM Copper (II) sulfate in water

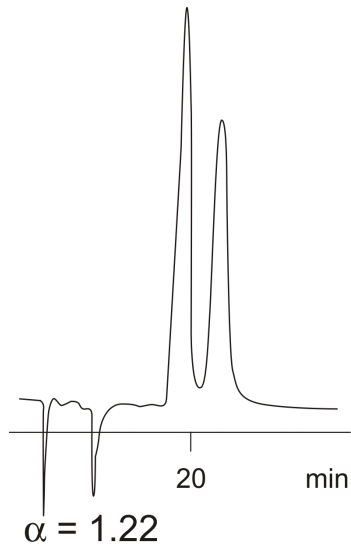
Eluent B: Methanol

Gradient Profile:	Step No.	Time (min)	Pct A	Pct B
	1	0	70	30

Flow Rate: 0.5 mL/min

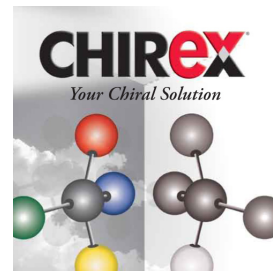
Col. Temp.: ambient

Detection: UV-Vis Abs.-Variable Wave.(UV) @ 254 nm (ambient)



ANALYTES:

- 1 D-DOPA
- 2 L-DOPA



Products used in this application:

CHIREX®

