

HPLC Application

ID No.: 14016

Serine

Column: Chirex® 3126 (D)-penicillamine, LC Column 150 x 4.6 mm, Ea

Dimensions: 150 x 4.6 mm ID

Order No: 00F-3126-E0

Elution Type: Isocratic

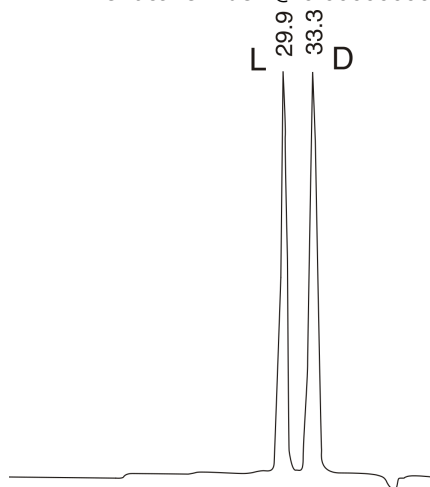
Eluent A: 1 mM Copper (II) sulfate in water

Gradient	Step No.	Time (min)	Pct A
Profile:	1	0	100

Flow Rate: 0.2 mL/min

Col. Temp.: ambient

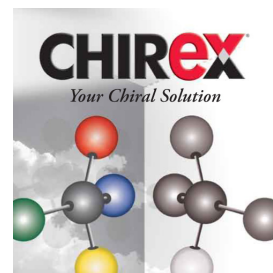
Detection: Refractive Index @ 0.0000000000 (ambient)



$$\alpha = 1.17$$

ANALYTES:

- 1 L-Serine
Retention Time: 29.933 min
- 2 D-Serine
Retention Time: 33.278 min



Products used in this application:

CHIREX®