

HPLC Application

ID No.: 14420

Jupiter Proteo Batch Reproducibility (Batch 5)

Column: Jupiter® 4 µm Proteo 90 Å, LC Column 150 x 4.6 mm, Ea

Dimensions: 150 x 4.6 mm ID

Order No: 00F-4396-E0

Elution Type: Gradient

Eluent A: 0.1% TFA in Water

Eluent B: 0.08% TFA in Acetonitrile

Gradient Profile:	Step No.	Time (min)	Pct A	Pct B
	1	0	95	5
	2	20	50	50

Flow Rate: 1 mL/min

Col. Temp.: ambient

Detection: Refractive Index @ 0.0000000000 (ambient)

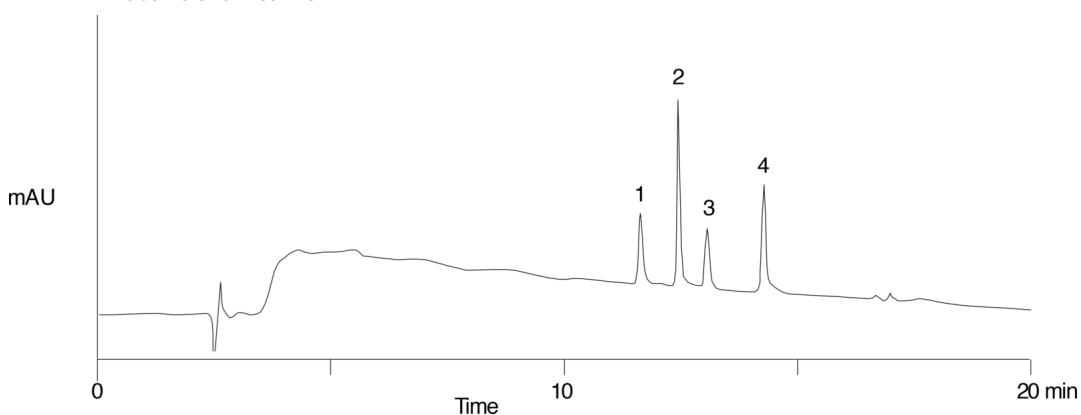
Analyst Note: SecurityGuard™ Guard Cartridge System extends column lifetime.

- SecurityGuard Cartridges, C12 4 x 3.0mm, 10/Pk Part No.: AJ0-6074

- Holder Part No.: KJ0-4282



Products used in this application:



ANALYTES:

- 1 Bradykinin
- 2 Neurotensin III
- 3 Neurotensin
- 4 Eledoisin

