

Cation-Exchange Std. (AL0-3040)

Column: Luna® 5 µm SCX 100 Å, LC Column 250 x 4.6 mm, Ea

Dimensions: 250 x 4.6 mm ID

Order No: 00G-4398-E0

Elution Type: Isocratic

Eluent A: 0.15M (NH₄)₂H₂PO₄, pH 6.0

| Gradient | Step No. | Time (min) | Pct A |
|----------|----------|------------|-------|
| Profile: | 1 | 0 | 100 |

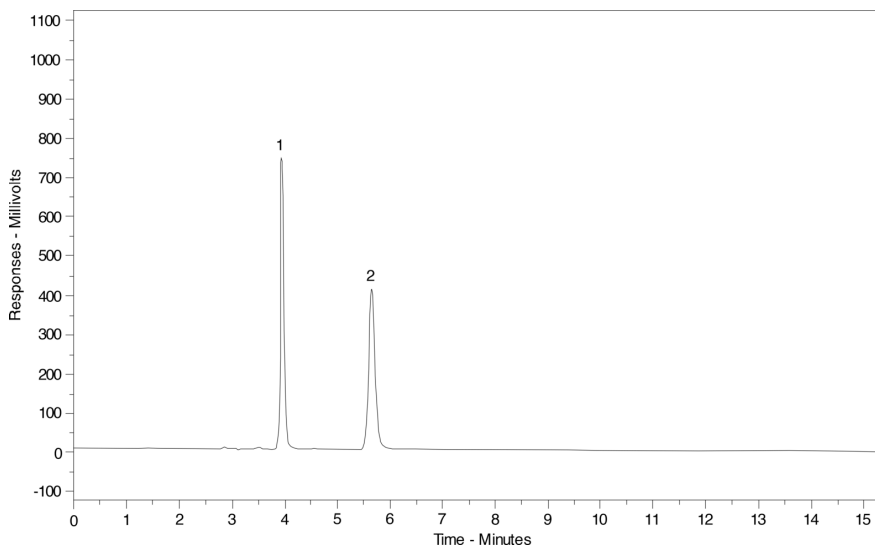
Flow Rate: 1 mL/min

Col. Temp.: ambient

Detection: Refractive Index @ 0.0000000000 (ambient)

Analyst Note: This standard is used to test the following Phenomenex silica-based ion-exchange columns:
SCX, SA, CM.

NOTE: Separation conditions and results may vary for your column. Contact your Technical Representative.



ANALYTES:

- 1** Uracil
Retention Time: 3.97 min
- 2** Cytosine
Retention Time: 5.66 min



Products used in this application:

