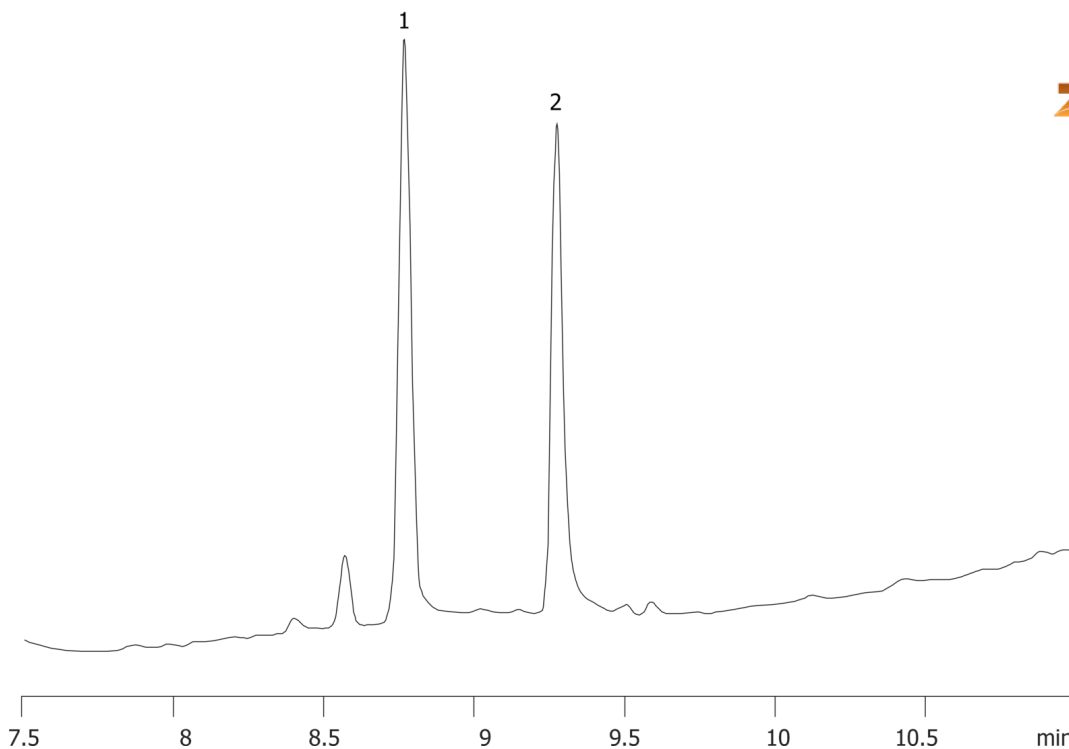


Ethylene and Propylene Glycol in Water on ZB-WAX**Column:** Zebron™ ZB-WAX, GC Cap. Column 30 m x 0.53 mm x 1.00 µm, Ea**Phase:** Polyethylene Glycol (PEG)**Dimensions:** 30 meters x 0.53 mm x 1 µm**Order No:** 7HK-G007-22**Oven Profile:** 80°C for 1 min to 200°C at 8°C/min for 5 min.**Carrier Gas:** Constant Flow Helium, 6.6 mL/min**Injection:** splitless :1 1 µL @ 225°C**Detection:** Flame Ionization (FID) (325°C)

14815

**Products used in this application:****ANALYTES:**

- 1 Propylene glycol
- 2 Ethylene glycol

