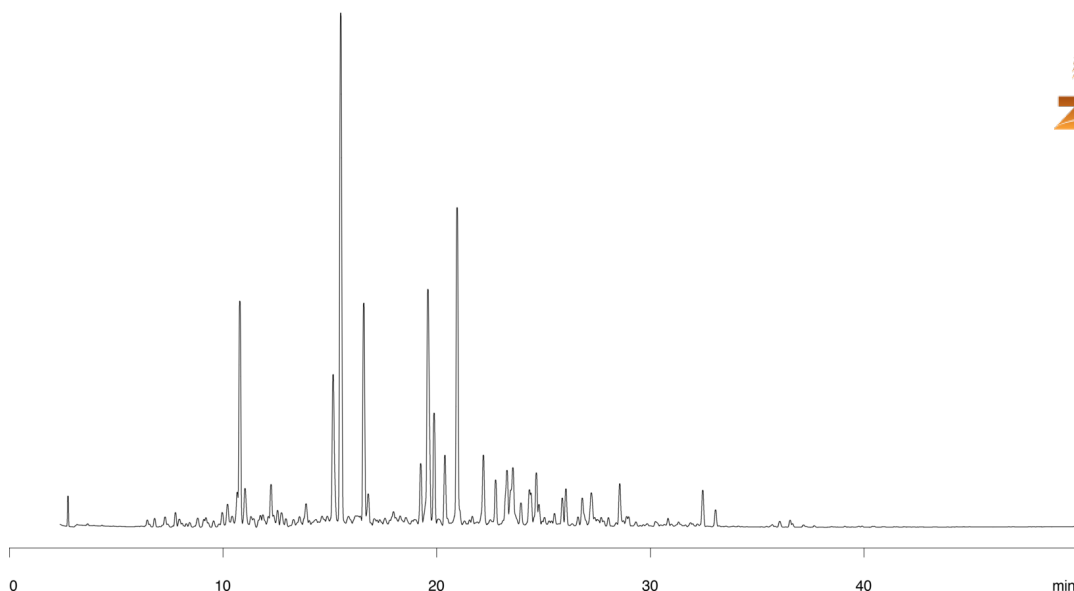


Weathered Gasoline on ZB-5**Column:** ZebronTM ZB-5, GC Cap. Column 30 m x 0.53 mm x 1.50 μ m, Ea**Phase:** 5% Phenyl 95% Dimethylpolysiloxane**Dimensions:** 30 meters x 0.53 mm x 1.5 μ m**Order No:** 7HK-G002-28**Oven Profile:** 40°C for 5 min to 300°C at 4°C/min for 5 min.**Carrier Gas:** Constant Flow Helium, 4.1 mL/min**Injection:** split 30:1 1 μ L @ 275°C**Detection:** Refractive Index (300°C)

14827

**Products used in this application:****ANALYTES:****1** Gasoline