

## Aniline - Phenol on ZB-5 30x0.32x1.0

**Column:** Zebron™ ZB-5, GC Cap. Column 30 m x 0.32 mm x 1.00 µm, Ea

**Phase:** 5% Phenyl 95% Dimethylpolysiloxane

**Dimensions:** 30 meters x 0.32 mm x 1 µm

**Order No:** 7HM-G002-22

**Oven Profile:** 130°C to 160°C at 5°C/min to 240°C at 20°C/min.

**Carrier Gas:** Constant Flow Helium, 1.5 mL/min

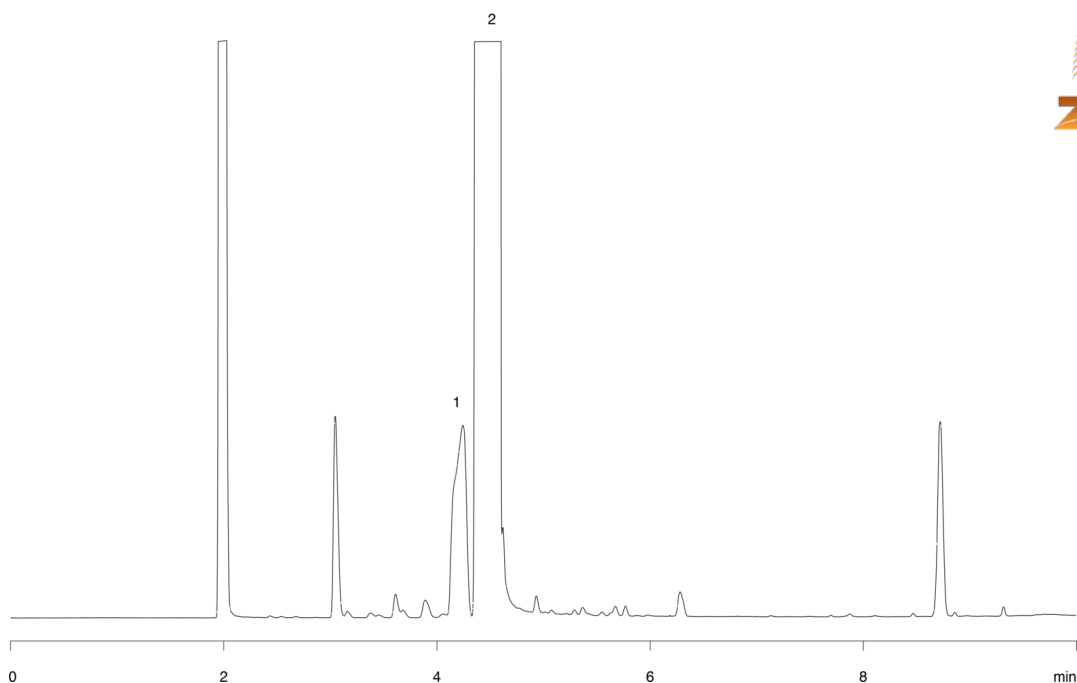
**Injection:** split 15:1 0.2 µL @ 200°C

**Detection:** Refractive Index (250°C)

14862



Products used in this application:



### ANALYTES:

- 1 Phenol
- 2 Aniline

