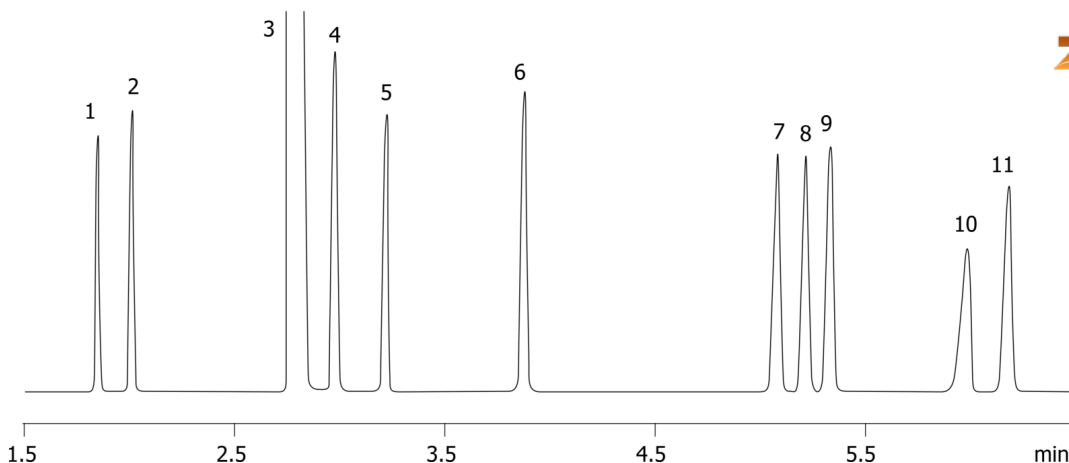


BTEX in Under Six Minutes on ZB-WAX**Column:** ZebronTM ZB-WAX, GC Cap. Column 30 m x 0.32 mm x 0.50 μ m, Ea**Phase:** Polyethylene Glycol (PEG)**Dimensions:** 30 meters x 0.32 mm x 0.5 μ m**Order No:** 7HM-G007-17**Oven Profile:** 60°C to 75°C at 15°C/min to 90°C at 3°C/min for 3 min**Carrier Gas:** Constant Flow Helium, 2 mL/min**Injection:** split 20:1 0.2 μ L @ 250°C**Detection:** Refractive Index (300°C)

14895

**Products used in this application:**

BTEX in Under Six Minutes on ZB-WAX

ANALYTES:

- 1 Pentane
- 2 Heptane
- 3 Methylene chloride
- 4 Benzene
- 5 Decane
- 6 Toluene
- 7 Ethylbenzene
- 8 p-Xylene
- 9 m-Xylene
- 10 Dodecane
- 11 o-Xylene

