

IgG Dog Reduced Jupiter C4 300

Column: Jupiter® 5 µm C4 300 Å, LC Column 150 x 2 mm, Ea

Dimensions: 150 x 2 mm ID

Order No: 00F-4167-B0

Elution Type: Gradient

Eluent A: 0.1% TFA in Water/Acetonitrile (95:5)

Eluent B: 0.085%TFA in Acetonitrile/IPA/Water (75:20:5)

Gradient Profile:	Step No.	Time (min)	Pct A	Pct B
	1	0	80	20
	2	20	5	95

Flow Rate: 0.25 mL/min

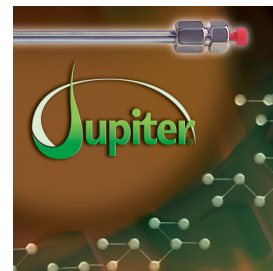
Col. Temp.: ambient

Detection: Refractive Index @ 0.0000000000 (ambient)

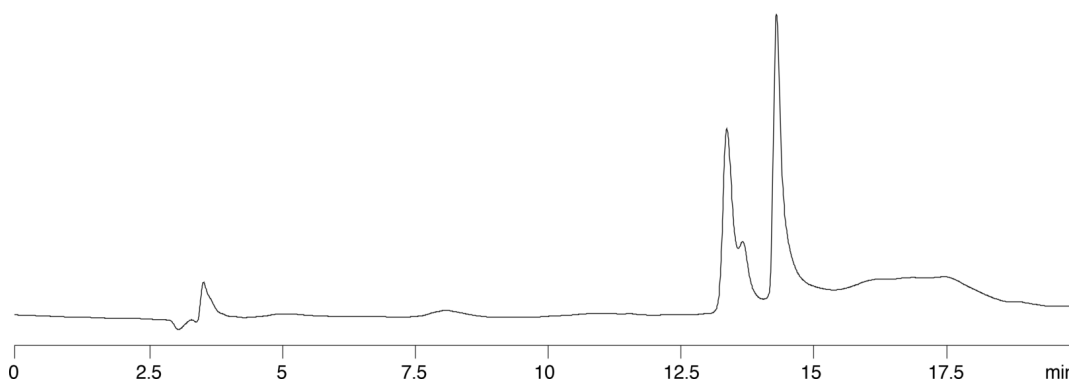
Analyst Note: Application Focus: Reducing antibodies to separate heavy and light chains by Jupiter C4

While using IPA in the organic mobile phase can help improve the chromatography of Ig-G, often the best way to observe changes in immunoglobins is by reducing the proteins and separating the heavy and light chain of the protein and analyzing them by HPLC on a Jupiter C4. In this example dog Ig-G was reduced with dithiothreitol and injected on a Jupiter 300 C4 column. As shown in App ID# 14909, one can see the heavy and light chains are baseline resolved using the conditions discussed in length in App ID#14908 (70% IPA in the organic mobile phase and

14909



Products used in this application:



ANALYTES:

1 IgG

