

## IgG Dog Native Acetonitrile

**Column:** Jupiter® 5 µm C4 300 Å, LC Column 150 x 2 mm, Ea

**Dimensions:** 150 x 2 mm ID

**Order No:** 00F-4167-B0

**Elution Type:** Gradient

**Eluent A:** 0.1% TFA in 95:5 Water/ACN

**Eluent B:** 0.085% TFA in 95:5 ACN/Water

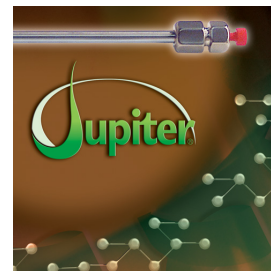
Gradient	Step No.	Time (min)	Pct A	Pct B
<b>Profile:</b>	<b>1</b>	0	80	20
	<b>2</b>	20	5	95

**Flow Rate:** 0.25 mL/min

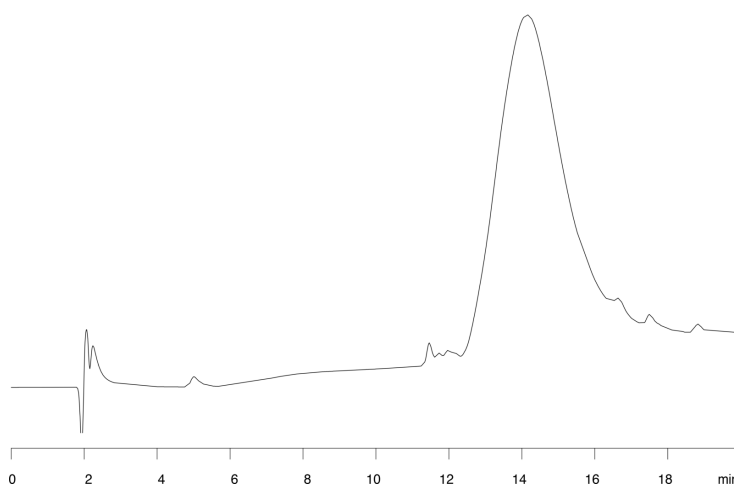
**Col. Temp.:** ambient

**Detection:** UV-Vis Abs.-Diode Array (PDA) @ 220 nm (ambient)

**Analyst Note:** These applications demonstrate the utility of using low amounts of isopropanol in the organic mobile phase to improve peak shape and resolution of basic proteins. App ID#14918 shows the elution of IgG on a Jupiter 300 C4 column where Acetonitrile is used as the organic mobile phase. App 14918



Products used in this application:



### ANALYTES:

**1** IgG

Retention Time: 14.14 min

