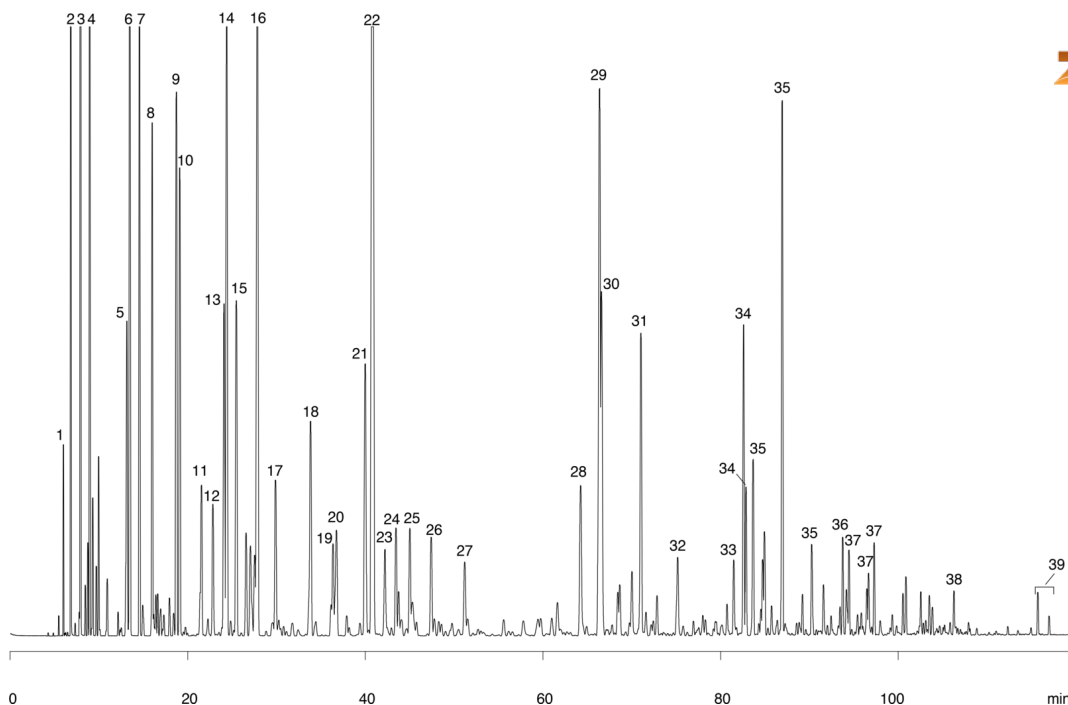


**Unleaded Gasoline - Pure on ZB-1**

**Column:** Zebron<sup>™</sup> ZB-1, GC Cap. Column 60 m x 0.25 mm x 1.00 µm, Ea  
**Phase:** 100% Dimethylpolysiloxane  
**Dimensions:** 60 meters x 0.25 mm x 1 µm  
**Order No:** 7KG-G001-22  
**Oven Profile:** 35°C for 13min to 45°C at 10°C/min for 15 min to 60°C at 1°C/min for 15 min to 200°C at 1.9°C/min for 5 min.  
**Carrier Gas:** Constant Flow Helium, 0.9 mL/min  
**Injection:** Split 100:1 0.2 µL @ 250°C  
**Detection:** Refractive Index (180°C)

14940

**Products used in this application:**

## Unleaded Gasoline - Pure on ZB-1

### ANALYTES:

- 1 Butane
- 2 Ethanol
- 3 2-Methylbutane
- 4 Pentane
- 5 2,3-Dimethylbutane
- 6 2-Methylpentane
- 7 3-Methylpentane
- 8 Hexane
- 9 Methyl cyclopentane
- 10 2,4-Dimethylpentane
- 11 Benzene
- 12 Cyclohexane
- 13 2-Methylhexane
- 14 2,3-Dimethylpentane
- 15 3-Methylhexane
- 16 2,2,3,3-Tetramethylbutane
- 17 Heptane
- 18 Methylcyclohexane
- 19 2,5-Dimethylhexane
- 20 2,4-Dimethylhexane
- 21 2,3,4-Trimethylpentane
- 22 Toluene
- 23 2,3-Dimethylhexane
- 24 2-Methylheptane
- 25 3-Methylheptane
- 26 2,2,5-Trimethylhexane
- 27 Octane
- 28 Ethylbenzene
- 29 m-Xylene
- 30 p-Xylene
- 31 o-Xylene
- 32 Nonane
- 33 Propylbenzene
- 34 Ethyl-Methylbenzenes
- 35 Trimethylbenzenes
- 36 1-Methyl-3-propylbenzene
- 37 Ethyl-dimethylbenzenes
- 38 Naphthalene
- 39 Methylnaphthalenes

