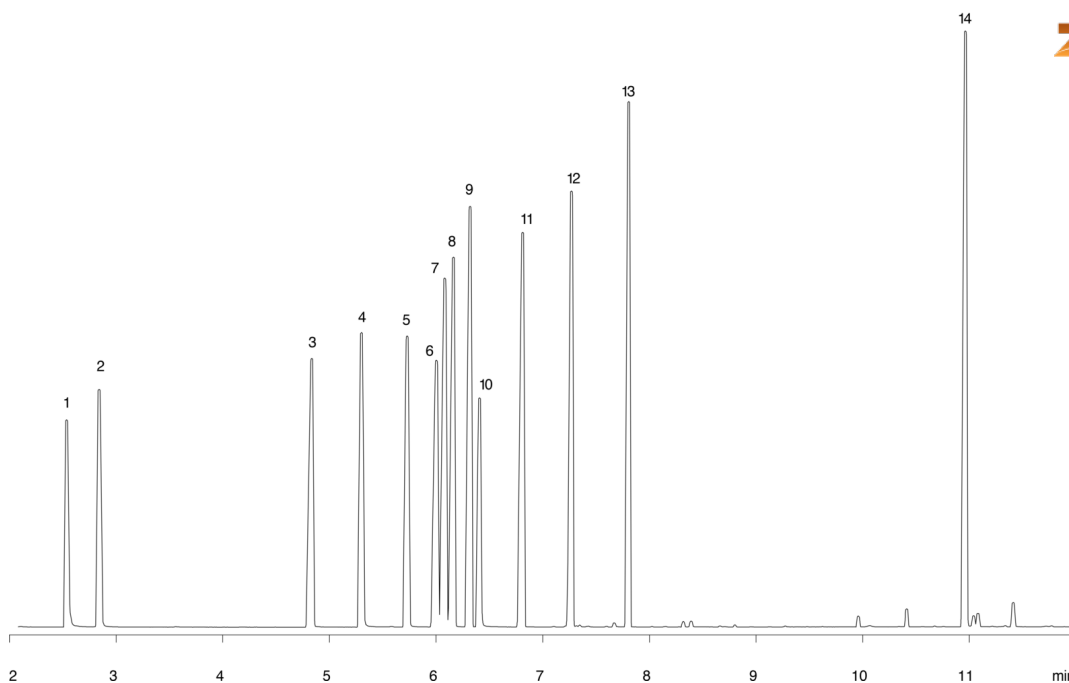


Aromatic Amines on ZB-5MS

Column: Zebron[™] ZB-5MS, GC Cap. Column 30 m x 0.25 mm x 0.25 µm, Ea
Phase: 5% Phenyl-Arylene 95% Dimethylpolysiloxane
Dimensions: 30 meters x 0.25 mm x 0.25 µm
Order No: 7HG-G010-11
Oven Profile: 60°C for 1 min to 130°C at 12°C/min to 220°C at 30°C/min for 4 min

Carrier Gas: Constant Flow Helium, 1 mL/min
Injection: split 100:1 1 µL @ 220°C
Detection: Refractive Index (240°C)

15429

**Products used in this application:**

Aromatic Amines on ZB-5MS

ANALYTES:

- 1 Piperidine
- 2 2-Methylpiperidine
- 3 Aniline
- 4 Benzylamine
- 5 alpha-Phenylethylamine
- 6 N-Methylaniline
- 7 m-Toluidine
- 8 o-Toluidine
- 9 N,N-Dimethylaniline
- 10 beta-Phenylethylamine
- 11 N-Ethylaniline
- 12 2,4-Dimethylaniline
- 13 N,N-Diethylaniline
- 14 Dibenzylamine

