

# HPLC Application

ID No.: 15626

## Pharmaceutical Compounds by Luna 3 $\mu$ C18(2) MercuryMS Cartridge 20 x 4.0mm

**Column:** Luna<sup>®</sup> 3  $\mu$ m C18(2) 100 Å, LC Column 20 x 4 mm, Mercury, Ea

**Dimensions:** 20 x 4 mm ID

**Order No:** 00M-4251-D0-CE

**Elution Type:** Gradient

**Eluent A:**

Gradient Profile:	Step No.	Time (min)	Pct A
	1	0	95
	2	1	10
	3	1.01	95
	4	1.2	95

**Flow Rate:** 2.5 mL/min

**Col. Temp.:** ambient

**Detection:** Refractive Index @ 0.0000000000 (25 °C)

**Analyst Note:** SecurityGuard<sup>™</sup> Guard Cartridge System extends column lifetime.

- SecurityGuard Cartridges, C18 4 x 3.0mm, 10/Pk Part No.: AJ0-4287

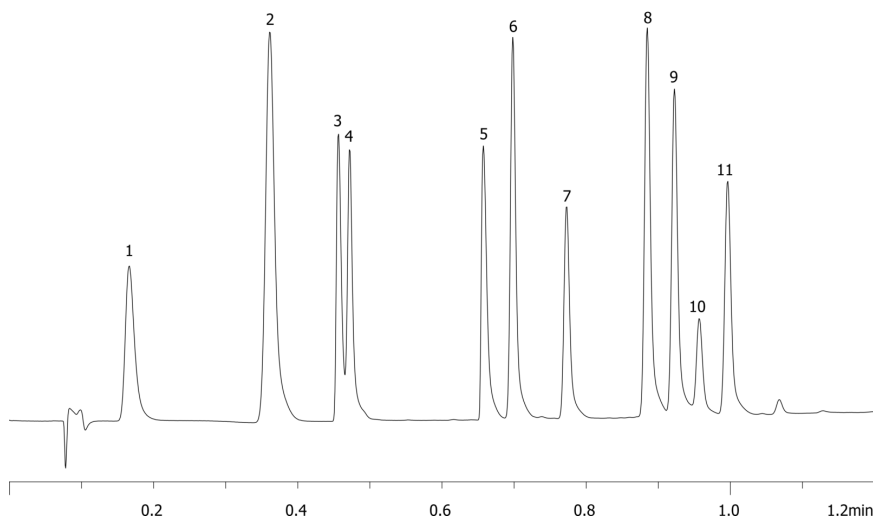
- Holder Part No.: KJ0-4282



Products used in this application:



15626



## Pharmaceutical Compounds by Luna 3 $\mu$ C18(2) MercuryMS Cartridge 20 x 4.0mm

### ANALYTES:

- 1 Sulfanilamide
- 2 Acetaminophen
- 3 Triamterene
- 4 Caffeine
- 5 Imipramine
- 6 Prednisolone
- 7 Furosemide
- 8 Naproxen
- 9 Probenecid
- 10 Ethacrynic acid
- 11 Indomethacin

