

HPLC Application

ID No.: 15721

Organics on Luna 3u C18(2) Capillary LC

Column: Luna® 3 µm C18(2) 100 Å, LC Column 50 x 0.3 mm, Capillary, Ea

Dimensions: 50 x 0.3 mm ID

Order No: 00B-4251-AC

Elution Type: Gradient

Eluent A: 10mM Ammonium Acetate

Eluent B: Acetonitrile

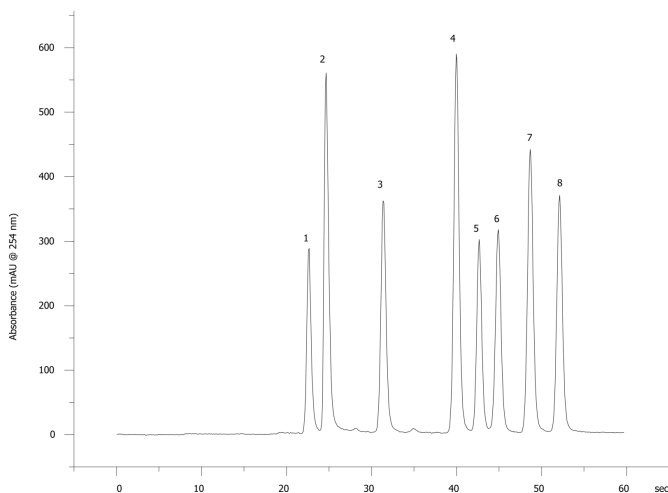
Gradient Profile:	Step No.	Time (min)	Pct A	Pct B
	1	0	98	2
	2	45	2	98

Flow Rate: 14

Col. Temp.: ambient

Detection: Refractive Index @ 0.000000000 (ambient)

15721



ANALYTES:

- 1 Theophylline
- 2 5-Phenyl-1H-Tetrazole
- 3 Colchicine
- 4 Acetophenone
- 5 Indole
- 6 Propiophenone
- 7 Butyrophenone
- 8 Valerophenone



Products used in this application:

