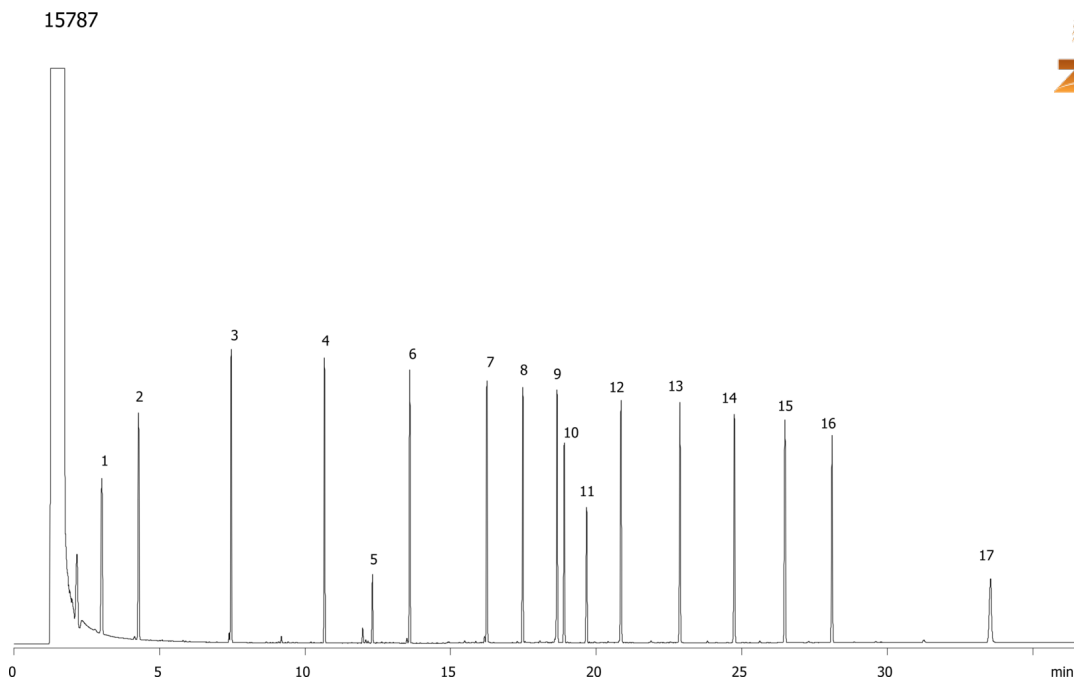


**Massachusetts EPH - Aliphatic Fraction on ZB-5MS****Column:** Zebron<sup>TM</sup> ZB-5MS, GC Cap. Column 30 m x 0.32 mm x 0.25  $\mu$ m, Ea**Phase:** 5% Phenyl-Arylene 95% Dimethylpolysiloxane**Dimensions:** 30 meters x 0.32 mm x 0.25  $\mu$ m**Order No:** 7HM-G010-11**Oven Profile:** 60°C for 1 min to 290°C at 8°C/min for 6.75 min**Carrier Gas:** Constant Flow Helium, 3 mL/min**Injection:** Splitless :1 2  $\mu$ L @ 285°C**Detection:** Refractive Index (315°C)**Analyst Note:** Analytes are 50ppm and IS and Surrogates are 40ppm for fractionation.**Products used in this application:**

## Massachusetts EPH - Aliphatic Fraction on ZB-5MS

### ANALYTES:

- 1 C9
- 2 C10
- 3 C12
- 4 C14
- 5 Butylhydroxytoluene
- 6 C16
- 7 C18
- 8 C19
- 9 C20
- 10 5-alpha-Androstane
- 11 1-Chloro-octadecane
- 12 C22
- 13 C24
- 14 C26
- 15 C28
- 16 C30
- 17 C36

