

HPLC Application

ID No.: 15930

Basic Compounds at High pH: Gemini 10u C18 Axia Packed 50x21.2mm vs. Competitive 5u Column 50x19mm

Column: Gemini® 10 µm C18 110 A, LC Column 50 x 21.2 mm, AXIA™ Packed, Ea

Dimensions: 50 x 21.2 mm ID

Order No: 00B-4436-P0-AX

Elution Type: Gradient

Eluent A: 95:5 50mM NH₄HCO₃ (pH 10.0) / Acetonitrile

Eluent B: 5:95 50mM NH₄HCO₃ (pH 10.0) / Acetonitrile

| Gradient Profile: | Step No. | Time (min) | Pct A | Pct B |
|-------------------|----------|------------|-------|-------|
| | 1 | 0 | 100 | 0 |
| | 2 | 7 | 0 | 100 |

Flow Rate: 30 mL/min

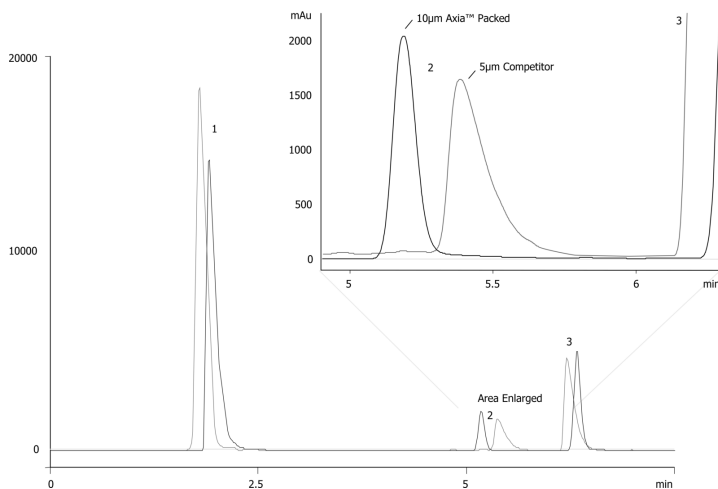
Col. Temp.: ambient

Detection: Refractive Index @ 0.0000000000 (ambient)

Analyst Note: Comparison of Gemini 10µm C18 Axia Packed column vs. leading 5µm competitive column. Flow rates adjusted to yield the same linear velocity.
15930 Contact your Technical Representative for more details.



Products used in this application:



ANALYTES:

- 1 Methacycline
- 2 Triprolidine
- 3 Amitriptyline

