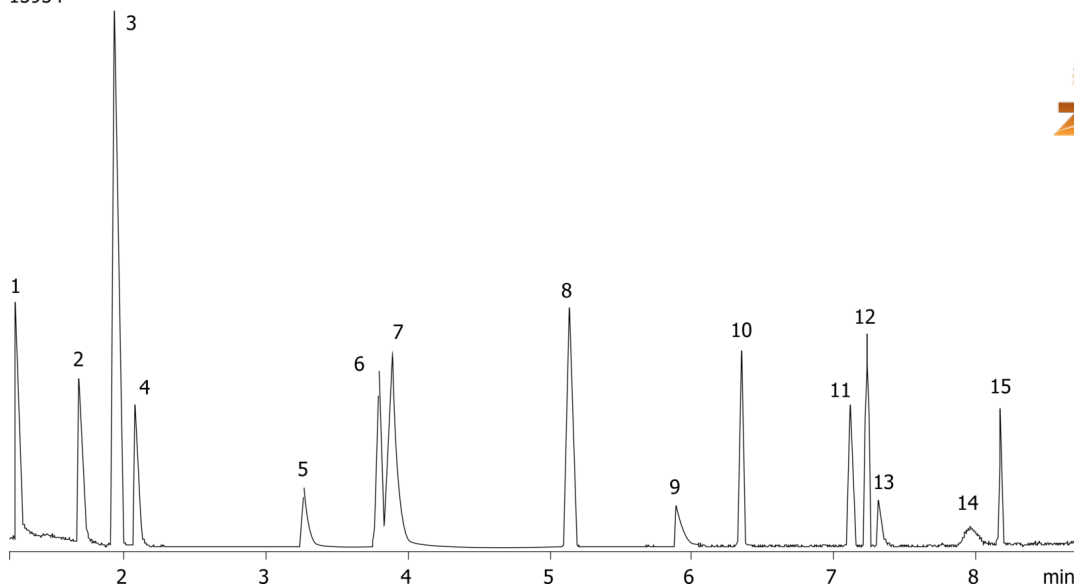


Common Solvents on ZB-624**Column:** Zebron[™] ZB-624, GC Cap. Column 20 m x 0.18 mm x 1.00 µm, Ea**Phase:** 6% Cyanopropylphenyl 94% Dimethylpolysiloxane**Dimensions:** 20 meters x 0.18 mm x 1 µm**Order No:** 7FD-G005-22**Oven Profile:****Carrier Gas:** Constant Flow Helium, 1 mL/min**Injection:** Split 25.0000000000:1 0 µL @ 100°C**Detection:** Refractive Index (250°C)

15954

**Products used in this application:**

Common Solvents on ZB-624

ANALYTES:

- 1 Methanol
- 2 Ethanol
- 3 Acetone
- 4 Isopropyl alcohol
- 5 n-Propanol
- 6 Methyl ethyl ketone
- 7 Ethyl acetate
- 8 Isopropyl acetate
- 9 Methoxypropanol (Propylene glycol monomethyl ether)
- 10 n-Propyl acetate
- 11 Methyl isobutyl ketone
- 12 Toluene
- 13 3-Ethoxy propanol (Propylene glycol α -monoethyl ether)
- 14 2,4-Pentanedione
- 15 n-Butyl acetate

