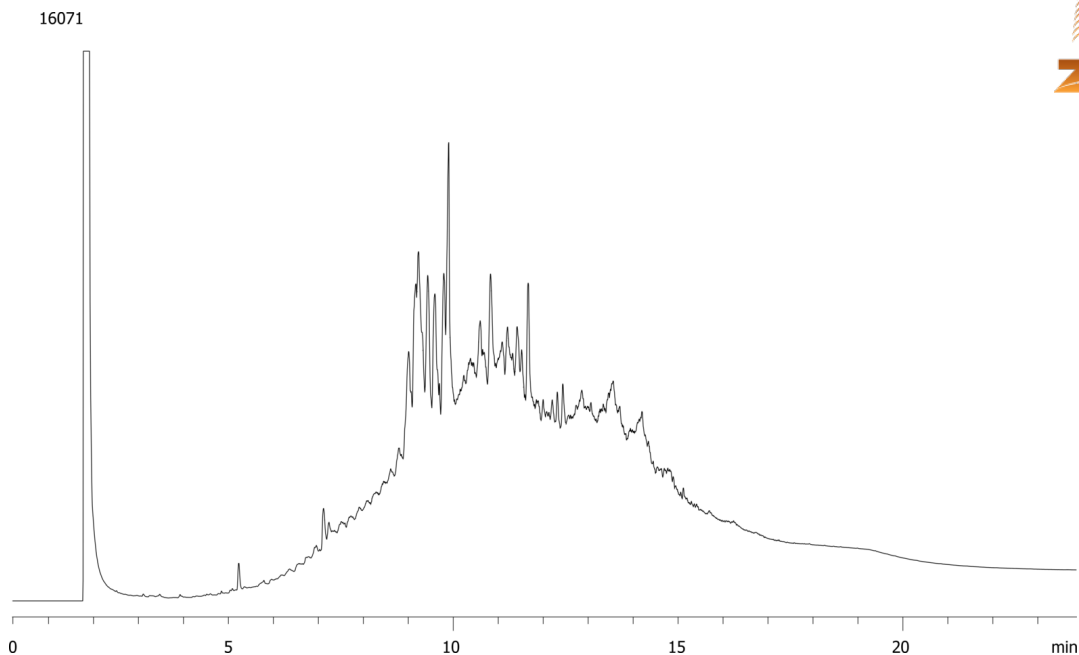


Mobil® Synthetic 10W30 Motor Oil on ZB-1HT**Column:** Zebron™ ZB-1HT, GC Cap. Column 30 m x 0.25 mm x 0.10 µm, Ea**Phase:** 100% Dimethylpolysiloxane**Dimensions:** 30 meters x 0.25 mm x 0.1 µm**Order No:** 7HG-G014-02**Oven Profile:****Carrier Gas:** Constant Flow Helium, 1 mL/min**Injection:** On-Column 0.000000000:1 0 µL @ 153°C**Detection:** Refractive Index (400°C)**Analyst Note:** Sample was 1% in dichloromethane**Products used in this application:****ANALYTES:**

- 1 Mobil® 1 10W30 fully synthetic motor oil

