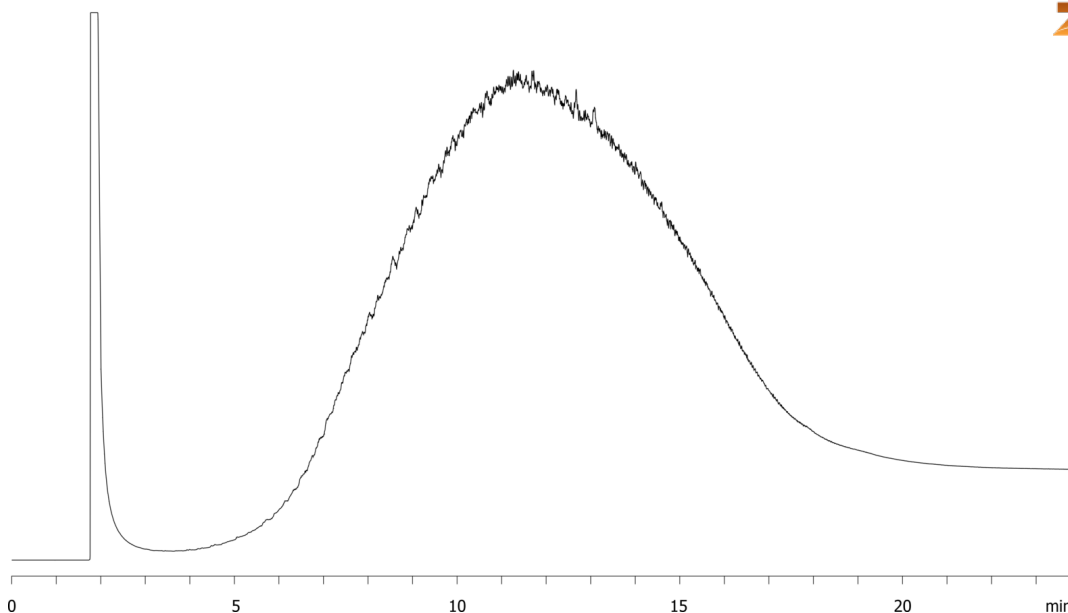


Mineral Oil on ZB-1HT**Column:** Zebron™ ZB-1HT, GC Cap. Column 30 m x 0.25 mm x 0.10 µm, Ea**Phase:** 100% Dimethylpolysiloxane**Dimensions:** 30 meters x 0.25 mm x 0.1 µm**Order No:** 7HG-G014-02**Oven Profile:** 150°C to 400°C at 14°C/min for 6 min**Carrier Gas:** Constant Flow Helium, 1 mL/min**Injection:** On-Column :1 1 µL @ 153°C**Detection:** Refractive Index (400°C)**Analyst Note:** Sample was 1% in dichloromethane**Products used in this application:**

16076

**ANALYTES:****1** Mineral oil