

**EPA 1613 Polychlorinated Dibenzofurans**

**Column:** Zebron<sup>TM</sup> ZB-5MS, GC Cap. Column 60 m x 0.25 mm x 0.25 µm, Ea  
**Phase:** 5% Phenyl-Arylene 95% Dimethylpolysiloxane  
**Dimensions:** 60 meters x 0.25 mm x 0.25 µm  
**Order No:** 7KG-G010-11  
**Oven Profile:** 120°C for 1 min to 220°C at 20°C/min for 16 min to 235°C at 5°C/min for 7 min to 300°C at 5°C/min for 15 min

**Carrier Gas:** Constant Flow Helium, 26 cm/sec

**Injection:** Splitless :1 2 µL @ 250°C

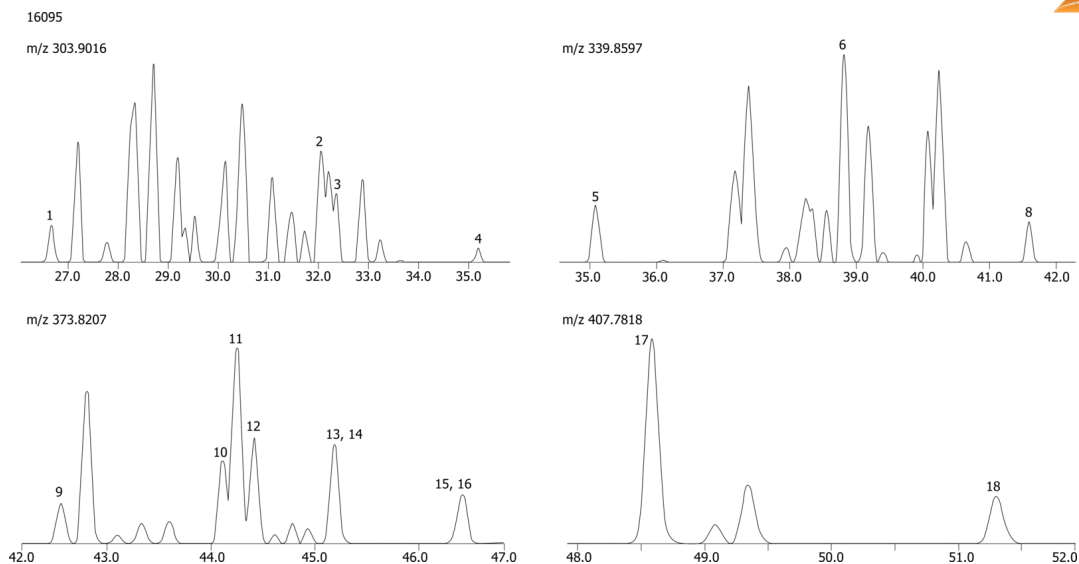
**Detection:** Refractive Index (290°C)

**Analyst Note:** Notes: Flow 26cm/sec @ 200°C. Only selected chromatograms shown below. For the complete set of Single Ion Chromatograms, showing both Polychlorinated Dibenzo-p-dioxins and Polychlorinated Dibenzofurans, please contact your Phenomenex Technical Consultant.

Mass Chromatograms are courtesy of V.N. Fishman, G.D. Martin, and L.L. Lamparski, The Dow Chemical Company,



Products used in this application:



## EPA 1613 Polychlorinated Dibenzofurans

### ANALYTES:

- 1** 1,3,6,8-TCDF
- 2** 2,3,4,7-TCDF
- 3** 2,3,7,8-TCDF / possible unknown TCDF
- 4** 1,2,8,9-TCDF
- 5** 1,3,4,6,8/1,2,4,6,8-PnCDF
- 6** 1,2,3,7,8-PnCDF
- 7** 2,3,4,7,8-PnCDF / unknown PnCDF
- 8** 1,2,3,8,9-PnCDF
- 9** 1,2,3,4,6,8-HxCDF
- 10** 1,2,3,4,6,7-HxCDF
- 11** 1,2,3,4,7,8-HxCDF
- 12** 1,2,3,6,7,8-HxCDF
- 13** 1,2,3,6,8,9-HxCDF
- 14** 2,3,4,6,7,8-HxCDF
- 15** 1,2,3,7,8,9-HxCDF
- 16** 1,2,3,4,8,9-HxCDF
- 17** 1,2,3,4,6,7,8-HpCDF
- 18** 1,2,3,4,7,8,9-HpCDF

