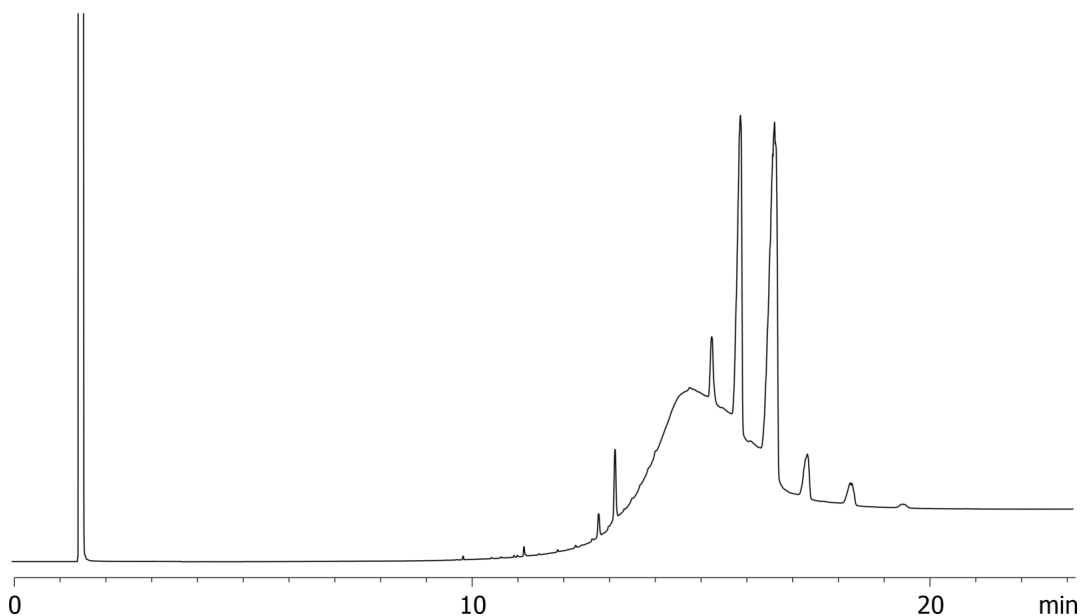


Canola Oil on ZB-5HT**Column:** Zebtron[™] ZB-5HT, GC Cap. Column 30 m x 0.25 mm x 0.10 µm, Ea**Phase:** 5% Phenyl 95% Dimethylpolysiloxane**Dimensions:** 30 meters x 0.25 mm x 0.1 µm**Order No:** 7HG-G015-02**Oven Profile:** 60°C to 400°C at 25°C/min for 10 min**Carrier Gas:** Constant Flow Helium, 1.5 mL/min**Injection:** On-Column :1 0.1 µL @ 63°C**Detection:** Refractive Index (400°C)**Analyst Note:** Sample was 1% in dichloromethane
Recommended Accessories:
Recommended Liner: Zebtron PLUS Liner for Agilent & Thermo
4mm ID Direct Connect

Liner Part No.: AG2-0A50-05

**Products used in this application:**

16121

**ANALYTES:****1** canola oil