

Jupiter® 300 C4 - Effect of Temperature on PEGylated Protein Separations

Column: Jupiter® 5 µm C4 300 Å, LC Column 150 x 4.6 mm, Ea

Dimensions: 150 x 4.6 mm ID

Order No: 00F-4167-E0

Elution Type: Gradient

Eluent A: 0.1% TFA in Water

Eluent B: 90% ACN 0.09% TFA in Water

| Gradient Profile: | Step No. | Time (min) | Pct A | Pct B |
|-------------------|----------|------------|-------|-------|
| | 1 | 0 | 80 | 20 |
| | 2 | 25 | 45 | 55 |

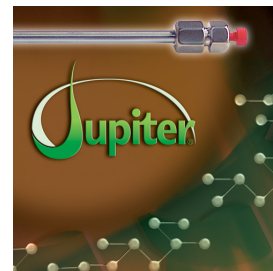
Flow Rate: 1 mL/min

Col. Temp.: 45 °C

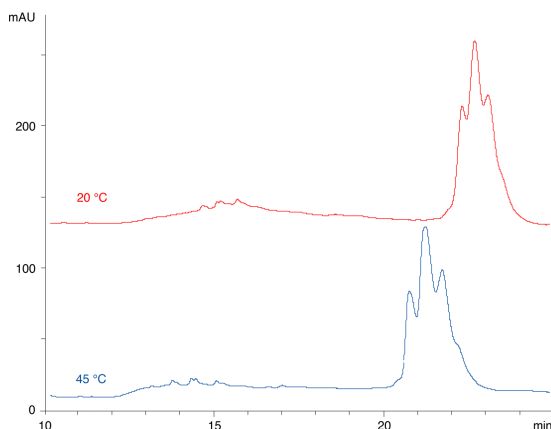
Detection: Refractive Index @ 0.0000000000 (ambient)

Analyst Note: Reversed phase runs of PEGylated carbonic anhydrase at different temperatures. Increasing the temperature to 45°C slightly improves resolution of different PEG forms.

16196



Products used in this application:



ANALYTES:

- 1 PEGylated Carbonic anhydrase

