

TMS Sugars on ZB-MR1

Column: Zebtron[™] ZB-MultiResidue[™]-1, GC Cap. Column 30 m x 0.25 mm x 0.25 μ m, Ea
Phase: Proprietary Pesticides Phase
Dimensions: 30 meters x 0.25 mm x 0.25 μ m
Order No: 7HG-G016-11
Oven Profile: 200 °C for 6 min.

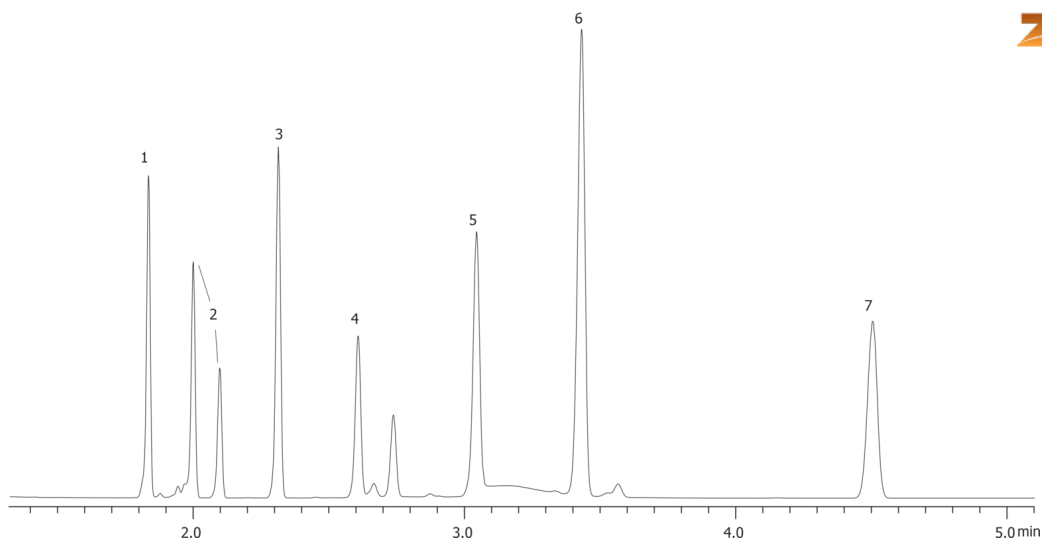
Carrier Gas: Constant Flow Helium, 2 mL/min

Injection: Split 100:1 1 μ L @ 225°C

Detection: Refractive Index (250°C)

Analyst Note: Sugar mix concentration 176 ppm. Sample was blown dry and then reconstituted in 100 μ L of 1:1

16248

**Products used in this application:****ANALYTES:**

- 1 D-(-)-Arabinose
- 2 d-Ribose
- 3 d-Xylose
- 4 D-Mannose
- 5 D-(+)-Galactose
- 6 alpha-d-Glucose
- 7 beta-D-(+)-Glucose

