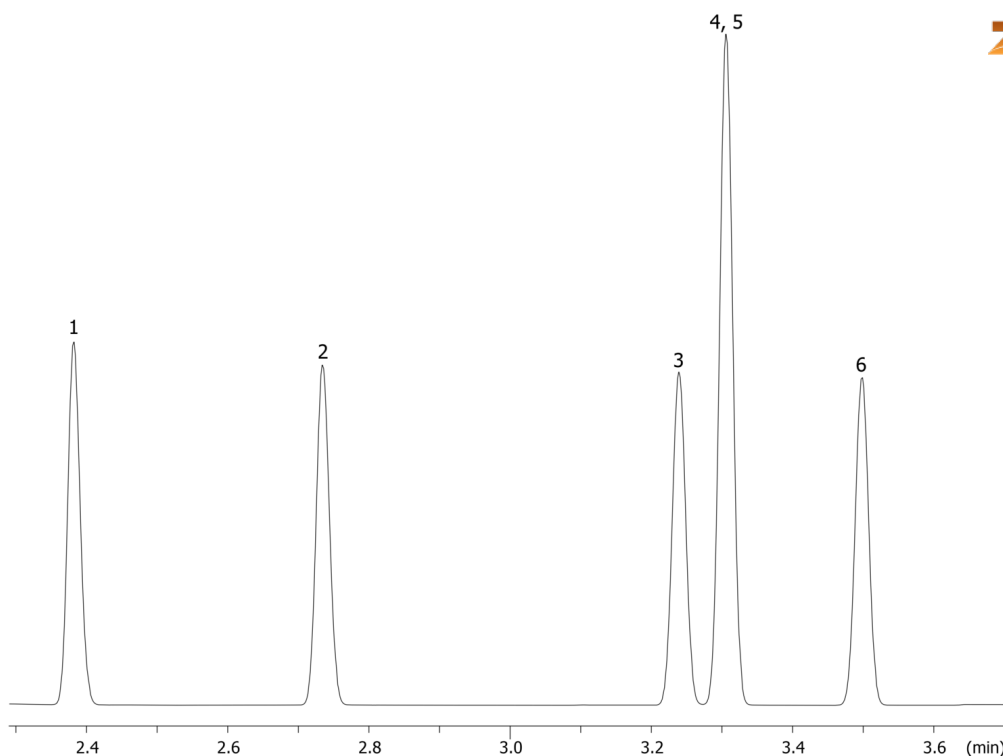


BTEXs on ZB-MR2**Column:** Zebtron[™] ZB-MultiResidue[™]-2, GC Cap. Column 30 m x 0.25 mm x 0.20 μ m, Ea**Phase:** Unknown or Proprietary**Dimensions:** 30 meters x 0.25 mm x 0.2 μ m**Order No:** 7HG-G017-10**Oven Profile:** 65 °C to 130 °C at 15 °C/min**Carrier Gas:** Constant Flow Helium, 1 mL/min**Injection:** Split 200:1 0.5 μ L @ 150°C**Detection:** Refractive Index (200°C)**Analyst Note:** All Analytes are 2.2 mg/mL in Methanol

16253

**Products used in this application:****ANALYTES:**

- 1 Benzene
- 2 Toluene
- 3 Ethylbenzene
- 4 m-Xylene
- 5 p-Xylene
- 6 o-Xylene

