

HPLC Application

ID No.: 16335

Nicotine and Metabolites on Luna 5um HILIC

Column: Luna® 5 µm HILIC 200 Å, LC Column 100 x 2 mm, Ea

Dimensions: 100 x 2 mm ID

Order No: 00D-4450-B0

Elution Type: Isocratic

Eluent A: 90/10 Acetonitrile/100mM Ammonium Formate pH 3.2

Gradient	Step No.	Time (min)	Pct A
Profile:	1	0	100

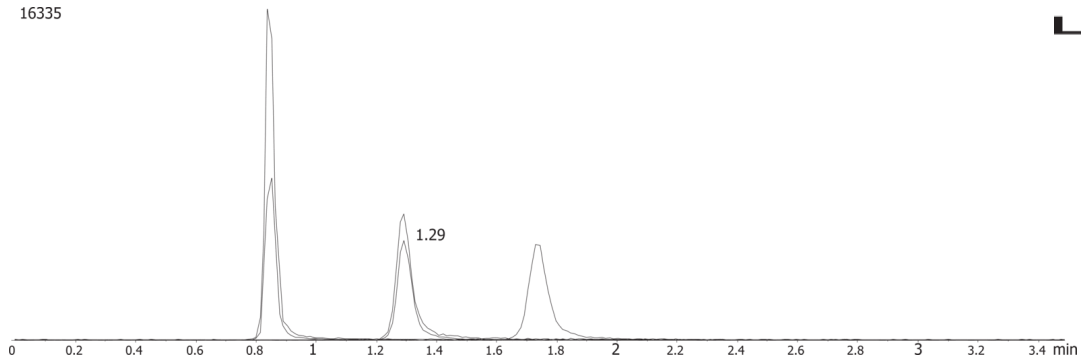
Flow Rate: 0.4 mL/min

Col. Temp.: ambient

Detection: Refractive Index @ 0.0000000000 (ambient)

Analyst Note: The pH of the aqueous buffer is specified. The pH in mixed organic was not measured.

16335



Products used in this application:



ANALYTES:

- 1 Cotinine
- 2 Nicotine
- 3 Nornicotine

