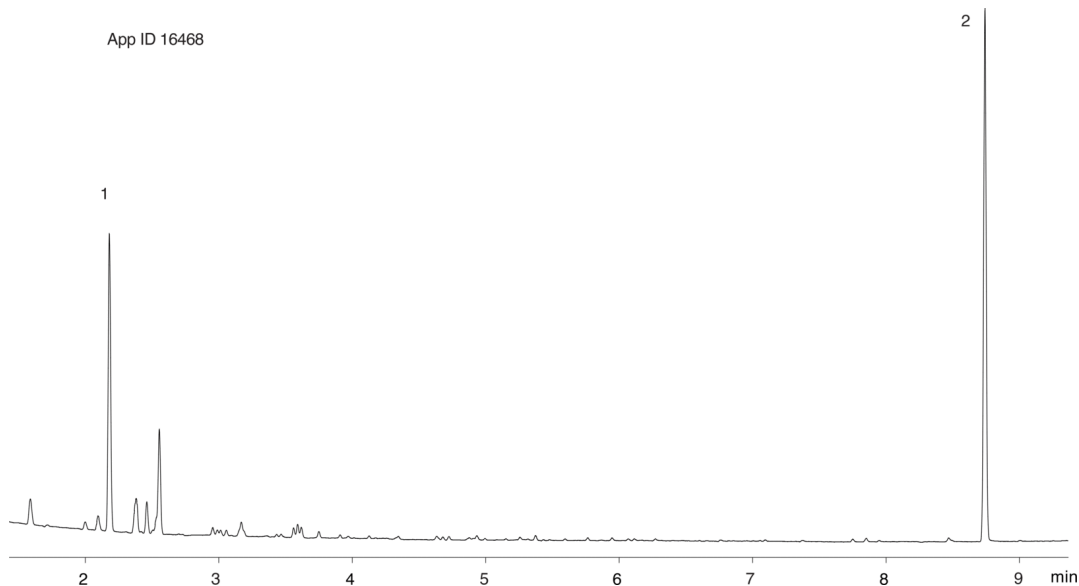


Aroclor 1221 on ZB-XLB**Column:** N/A**Phase:** N/A**Dimensions:** N/A**Order No:** N/A**Oven Profile:** N/A**Carrier Gas:** N/A**Injection:** N/A**Detection:** N/A**Analyst Note:** Aroclor 1221 concentration 1 ug/ml**ANALYTES:**

- 1 Tetrachloro-m-xylene
- 2 Decachlorobiphenyl

