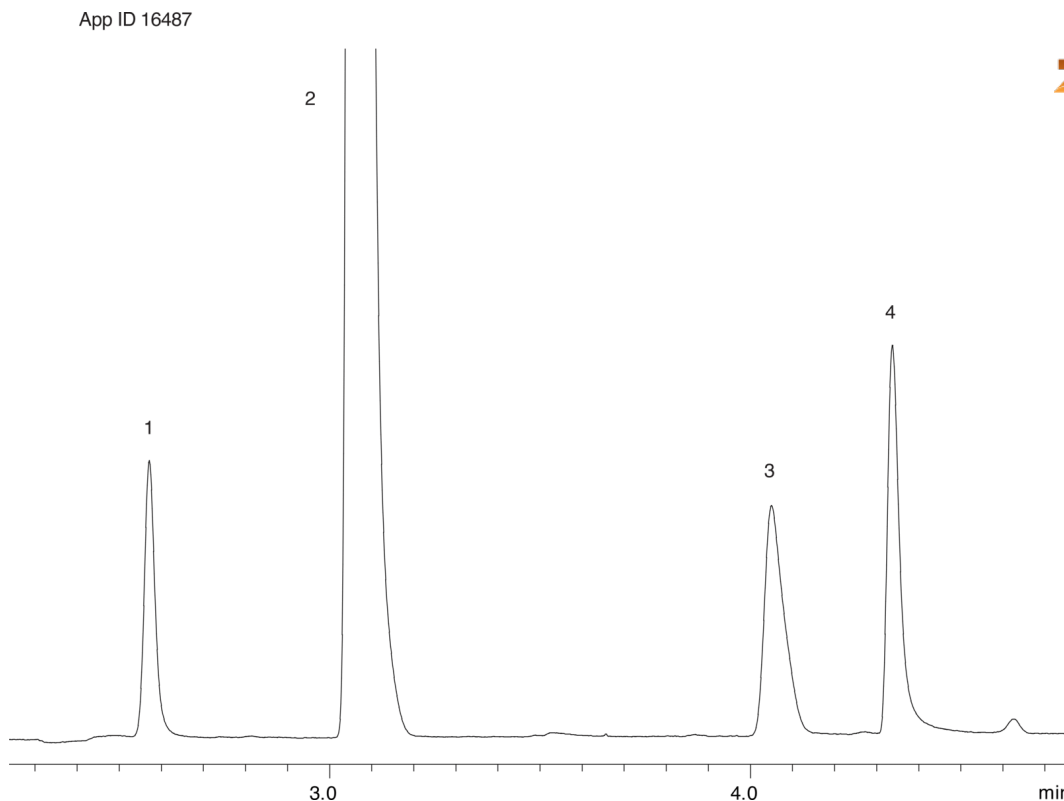


**Ethylene Oxide, Ethylene Chlorohydrin, and Ethylene Glycol in Water on ZB-1****Column:** Zebtron<sup>™</sup> ZB-1, GC Cap. Column 30 m x 0.53 mm x 1.50  $\mu$ m, Ea**Phase:** 100% Dimethylpolysiloxane**Dimensions:** 30 meters x 0.53 mm x 1.5  $\mu$ m**Order No:** 7HK-G001-28**Oven Profile:** 50 °C for 1 min to 145 °C @ 15 °C/min for 1 min**Carrier Gas:** Constant Flow Hydrogen, 3.9 mL/min**Injection:** Split 5:1 0.2  $\mu$ L @ 150°C**Detection:** Refractive Index (300°C)**Analyst Note:** Analytes concentration 100 ppm in water.**Products used in this application:****ANALYTES:**

- 1 Ethylene oxide
- 2 Methylene chloride
- 3 Ethylene chlorohydrin
- 4 Ethylene glycol

