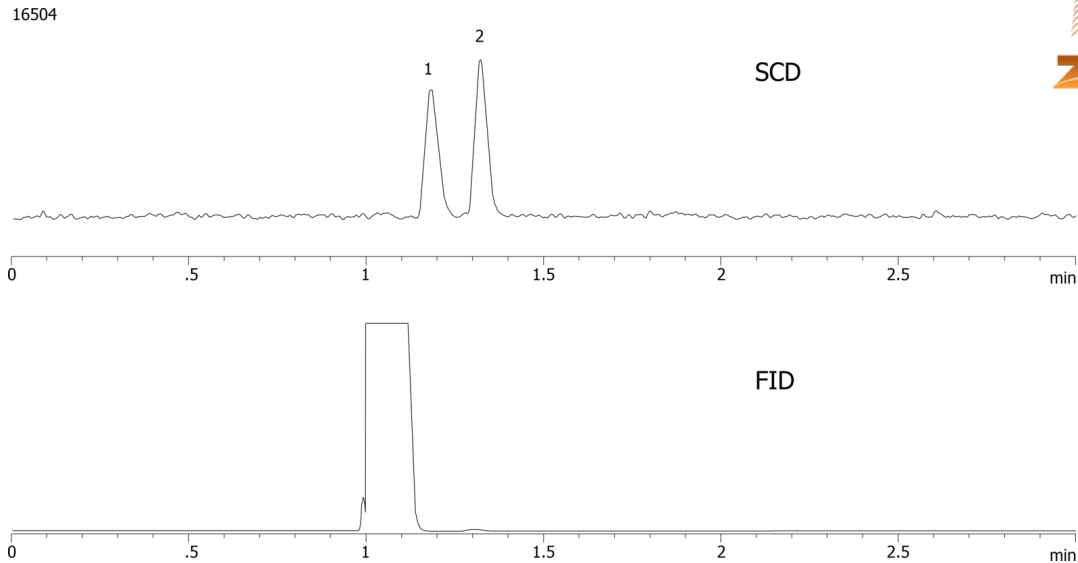


**H<sub>2</sub>S and COS on ZB-1****Column:** Zebron<sup>TM</sup> ZB-1, GC Cap. Column 30 m x 0.32 mm x 3.00 µm, Ea**Phase:** 100% Dimethylpolysiloxane**Dimensions:** 30 meters x 0.32 mm x 3 µm**Order No:** 7HM-G001-36**Oven Profile:** 30 °C for 3 min**Carrier Gas:** Constant Flow Helium, 2 mL/min**Injection:** Split 10:1 0.5 µL @ 100°C**Detection:** Refractive Index (200°C)**Analyst Note:** Analytes are 5ppm in Ethylene**Products used in this application:****ANALYTES:**

- 1 Hydrogen sulfide
- 2 COS

