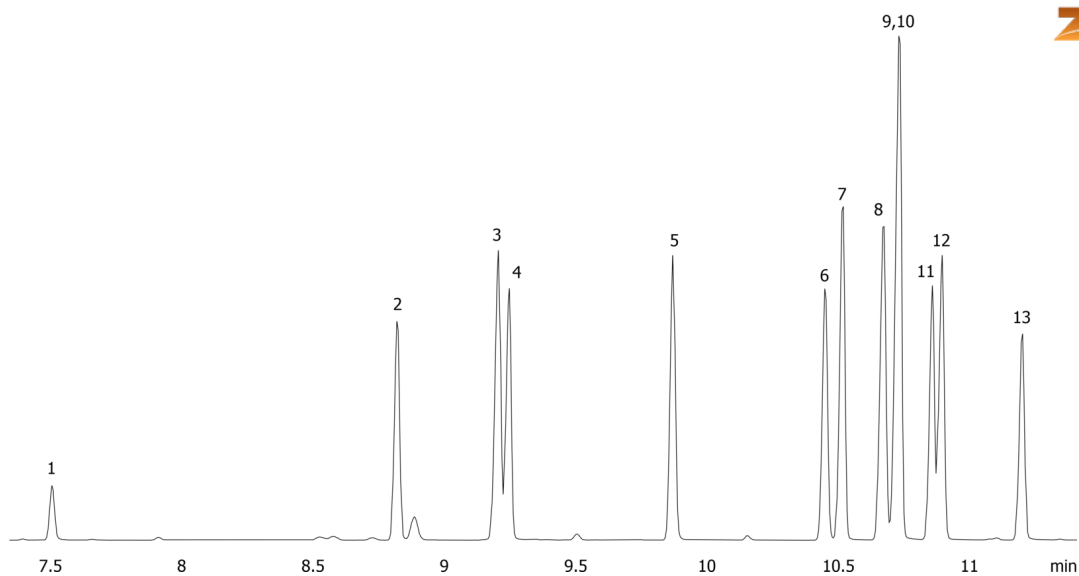


**Phenols on ZB-XLB****Column:** Zebtron<sup>™</sup> ZB-XLB, GC Cap. Column 30 m x 0.25 mm x 0.25  $\mu$ m, Ea**Phase:** Proprietary XLB Phase**Dimensions:** 30 meters x 0.25 mm x 0.25  $\mu$ m**Order No:** 7HG-G019-11**Oven Profile:** 40 °C for 2 min to 340 °C @ 10 °C/min.**Carrier Gas:** Constant Flow Helium, 1.5 mL/min**Injection:** Split 5:1 1  $\mu$ L @ 250°C**Detection:** Refractive Index (180°C)**Analyst Note:** 50ppm phenols mix in MeCl<sub>2</sub>

16548

**Products used in this application:**

## Phenols on ZB-XLB

### ANALYTES:

- 1** Phenol
- 2** 2-Methylphenol
- 3** 4-Methylphenol
- 4** 3-Methylphenol
- 5** 2,6-Dimethylphenol
- 6** 2,4-Dimethylphenol
- 7** 2,5-Dimethylphenol
- 8** 4-Ethylphenol
- 9** 3-Ethylphenol
- 10** 2-Ethylphenol
- 11** 3,5-Dimethylphenol
- 12** 2,3-Dimethylphenol
- 13** 3,4-Dimethylphenol

