

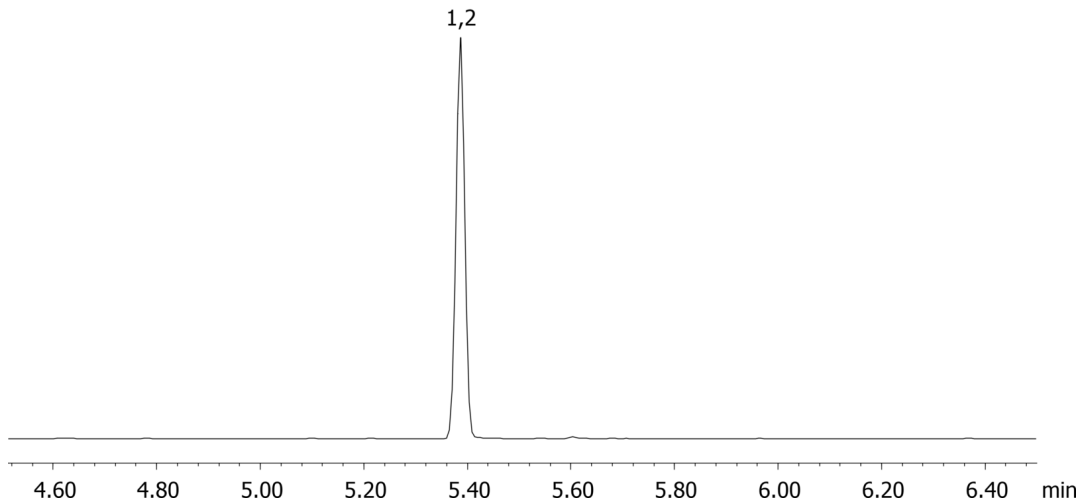
**Carboxy-THC by MSD on a ZB-XLB**

**Column:** N/A  
**Phase:** N/A  
**Dimensions:** N/A  
**Order No:** N/A  
**Oven Profile:** N/A

**Carrier Gas:** N/A  
**Injection:** N/A  
**Detection:** N/A

**Analyst Note:** Analytes are 1.5ppm derivatized with BSTFA  
Sim ions:  
(Quant ion\*) D3-Carboxy-thc (\*374,476,477): Carboxy-thc (\*371,473,474)

16695

**ANALYTES:**

- 1 Carboxy-THC
- 2 Carboxy-THC-d3

