

# HPLC Application

ID No.: 16727

## Troger's Base on Lux 5 µm Cellulose-1

**Column:** Lux<sup>®</sup> 5 µm Cellulose-1, LC Column 250 x 4.6 mm, Ea

**Dimensions:** 250 x 4.6 mm ID

**Order No:** 00G-4459-E0

**Elution Type:** Isocratic

**Eluent A:** Hexane

**Eluent B:** Isopropanol

Gradient Profile:	Step No.	Time (min)	Pct A	Pct B
	1	0	90	10

**Flow Rate:** 1 mL/min

**Col. Temp.:** 25 °C

**Detection:** UV-Vis Abs.-Diode Array (PDA) @ 230 nm (ambient)

**Detector Info:** alpha=1.22 and Rs=3.73

**Analyst Note:** SecurityGuard<sup>™</sup> Guard Cartridge System extends column lifetime.

- SecurityGuard Cartridges, Lux Cellulose-1, 4 x 3.0mm, 10/Pk Part No.: AJ0-8403

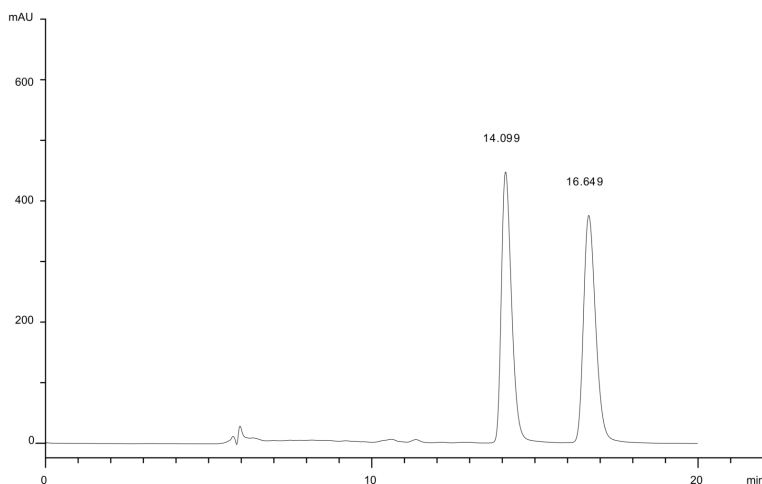
- Holder Part No.: KJ0-4282



Products used in this application:



16727



### ANALYTES:

- 1 Trogerâ€™s base
- 2 Trogerâ€™s base

