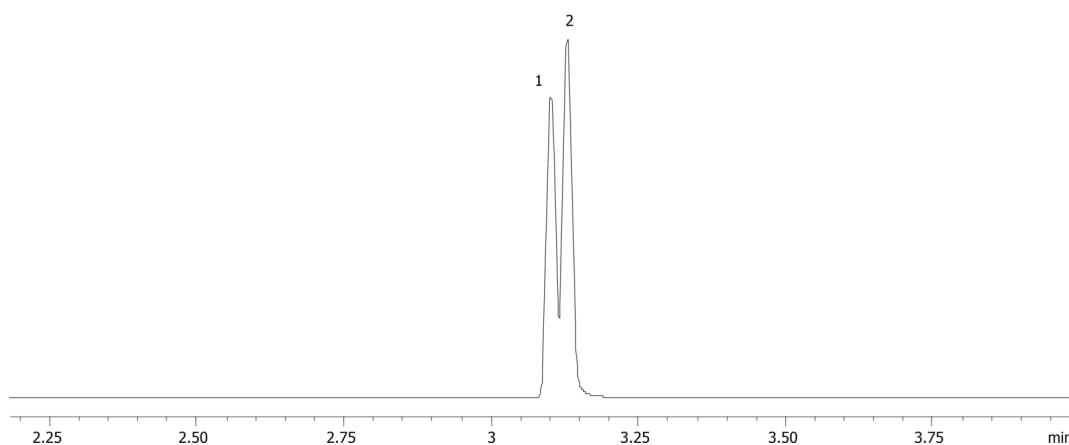


**Methadone by MSD on a ZB-5MS****Column:** Zebtron<sup>™</sup> ZB-5MS, GC Cap. Column 10 m x 0.18 mm x 0.18  $\mu$ m, Ea**Phase:** 5% Phenyl-Arylene 95% Dimethylpolysiloxane**Dimensions:** 10 meters x 0.18 mm x 0.18  $\mu$ m**Order No:** 7CD-G010-08**Oven Profile:** 150 °C to 320 °C @ 20 °C/ min**Carrier Gas:** Constant Flow He, 1.2 mL/min**Injection:** Split 10:1 1  $\mu$ L @ 250°C**Detection:** Refractive Index (320°C)**Analyst Note:** Analytes are 24ppm  
Sim ions:  
(Quant ion\*) D9-Methadone (\*78,303): Methadone (\*72,294,223)**Products used in this application:****ANALYTES:**

- 1 Methadone-d9
- 2 Methadone

