

HPLC Application

ID No.: 17466

2-Phenylcyclohexanone on Lux 3µm Cellulose-1

Column: Lux[®] 3 µm Cellulose-1, LC Column 250 x 4.6 mm, Ea

Dimensions: 250 x 4.6 mm ID

Order No: 00G-4458-E0

Elution Type: Isocratic

Eluent A: 0.1 % DEA in Hexane

Eluent B: 0.1% DEA in IPA

Gradient Profile:	Step No.	Time (min)	Pct A	Pct B
	1	15	90	10

Flow Rate: 1 mL/min

Col. Temp.: ambient

Detection: Refractive Index @ 0.0000000000 (ambient)

Analyst Note: SecurityGuard[™] Guard Cartridge System extends column lifetime.

- SecurityGuard Cartridges, Lux Cellulose-1, 4 x 3.0mm, 10/Pk Part No.: AJ0-8403

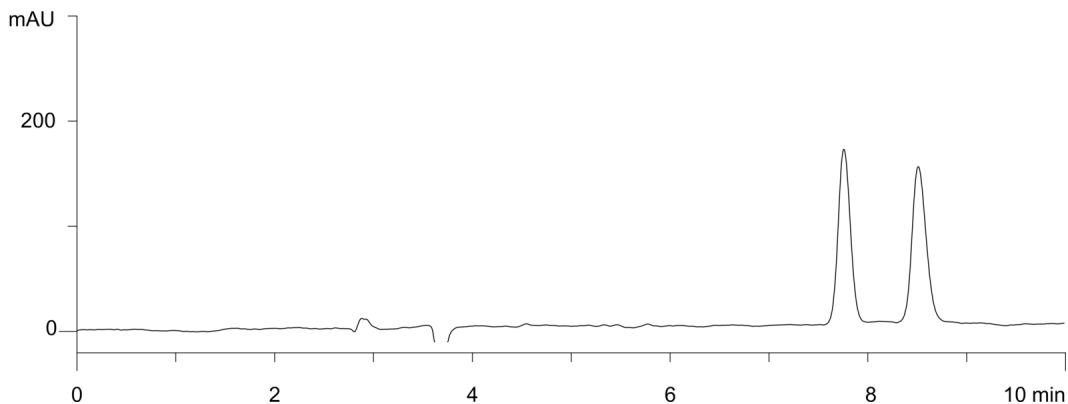
- Holder Part No.: KJ0-4282



Products used in this application:



17466



ANALYTES:

1 2-Phenylcyclohexanone

Retention Time: 7.8 min

2 2-Phenylcyclohexanone

Retention Time: 8.5 min

