

PEGylated proteins on Jupiter® 300 C18 3µm and 5µm, and C4 5µm columns

Column: Jupiter® 3 µm C18 300 Å, LC Column 150 x 4.6 mm, Ea

Dimensions: 150 x 4.6 mm ID

Order No: 00F-4263-E0

Elution Type: Gradient

Eluent A: 0.1% TFA, 2% ACN in Water

Eluent B: 90% ACN, 0.085% TFA in Water

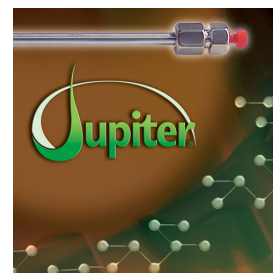
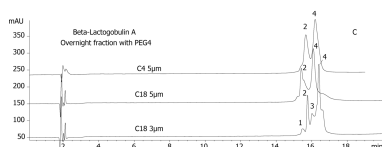
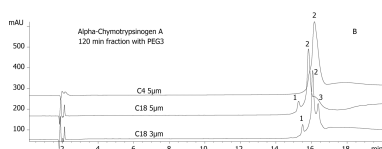
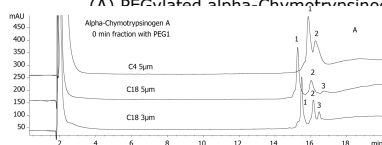
Gradient Profile:	Step No.	Time (min)	Pct A	Pct B
	1	0	80	20
	2	25	35	65

Flow Rate: 1 mL/min

Col. Temp.: 45 °C

Detection: Refractive Index @ 0.0000000000 (25 °C)

Analyst Note: Compare reverse phase separations of different PEGylated and intact proteins selected at different reaction time-points on three different columns.



Products used in this application:



ANALYTES:

- 1 PEGylated Proteins

