

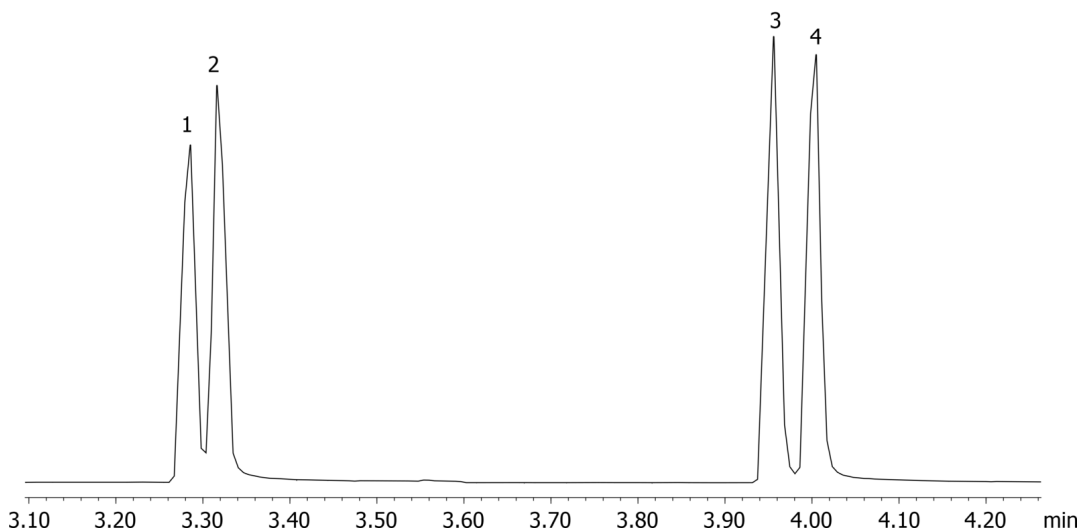
Amphetamines by MSD on a ZB-XLB**Column:** N/A**Phase:** N/A**Dimensions:** N/A**Order No:** N/A**Oven Profile:** N/A**Carrier Gas:** N/A**Injection:** N/A**Detection:** N/A**Analyst Note:** Analytes are 40ppm derivatized with HFBA

Sim ions:

(Quant ion*) D11-Amphetamine (*244,128): Amphetamine (*240,118,117): D14-Methamphetamine (*261,213):

Methamphetamine (*254,210,118)

17613

**ANALYTES:**

- 1 Amphetamine-d11
- 2 Amphetamine
- 3 Methamphetamine-d14
- 4 Methamphetamine

