

HPLC Application

ID No.: 17678

Metolazone on Lux 5 μ Cellulose-1 250 x 4.6mm in NP

Column: Lux[®] 5 μ m Cellulose-1, LC Column 250 x 4.6 mm, Ea

Dimensions: 250 x 4.6 mm ID

Order No: 00G-4459-E0

Elution Type: Isocratic

Eluent A: 0.1 % DEA in Hexane

Eluent B: 0.1% DEA in Ethanol

Gradient Profile:	Step No.	Time (min)	Pct A	Pct B
	1	10	80	20

Flow Rate: 1 mL/min

Col. Temp.: ambient

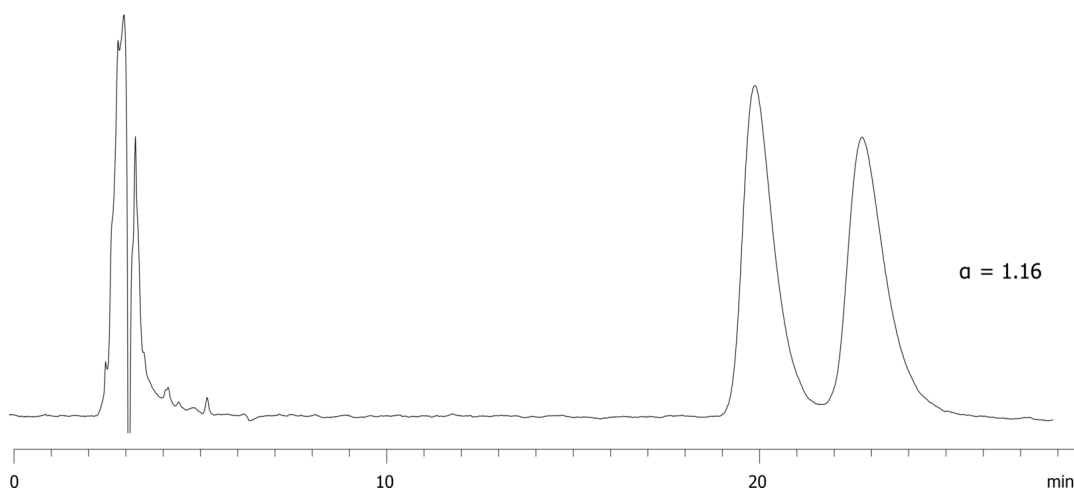
Detection: Refractive Index @ 0.0000000000 (ambient)

Analyst Note: SecurityGuard[™] Guard Cartridge System extends column lifetime.

- SecurityGuard Cartridges, Lux Cellulose-1, 4 x 3.0mm, 10/Pk Part No.: AJ0-8403

- Holder Part No.: KJ0-4282

17678



ANALYTES:

1 Metolazone

Retention Time: 20 min

2 Metolazone

Retention Time: 22.9 min



Products used in this application:

