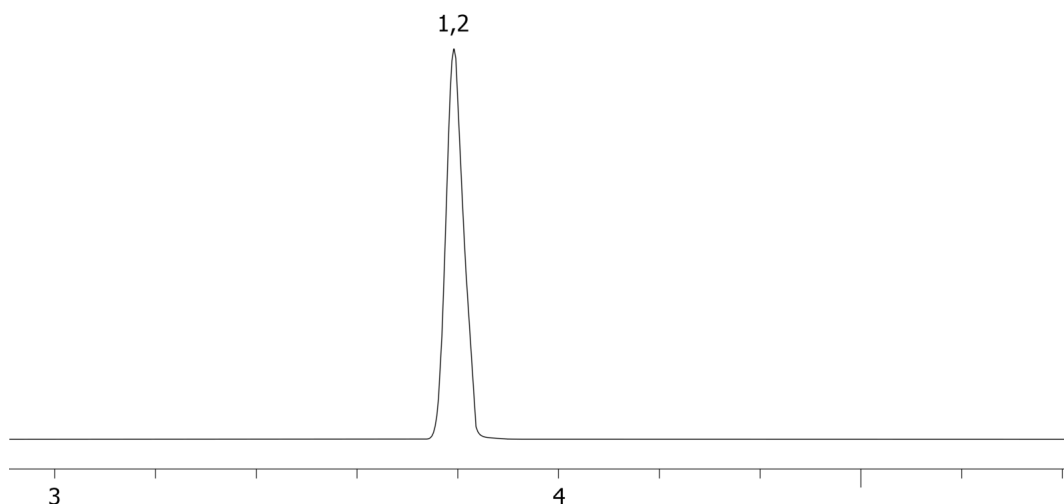


Benzene and butanol by MSD on a ZB-5MSi (b)**Column:** Zebtron[™] ZB-5MSi, GC Cap. Column 30 m x 0.25 mm x 0.50 μ m, Ea**Phase:** 5% Phenyl 95% Dimethylpolysiloxane**Dimensions:** 30 meters x 0.25 mm x 0.5 μ m**Order No:** 7HG-G018-17**Oven Profile:** 30°C to 100°C at 10°C/min**Carrier Gas:** Constant Flow Helium, 55 cm/sec**Injection:** Split 50:1 1 μ L @ 250°C**Detection:** Refractive Index (250°C)**Analyst Note:** Analytes are 50ppm in DMSO
(Peaks coelute, not for view by sales)**Products used in this application:**

17685

**ANALYTES:**

- 1 Benzene
- 2 Butanol

