

Bronopol in Glue by HPLC-DAD

Column: Luna® 5 µm PFP(2) 100 Å, LC Column 150 x 3 mm, Ea

Dimensions: 150 x 3 mm ID

Order No: 00F-4448-Y0

Elution Type: Isocratic

Eluent A: Methanol

Eluent B: Water with Phosphoric Acid (0.1% v/v)

Gradient Profile:	Step No.	Time (min)	Pct A	Pct B
1	0	5	95	

Flow Rate: 0.5 mL/min

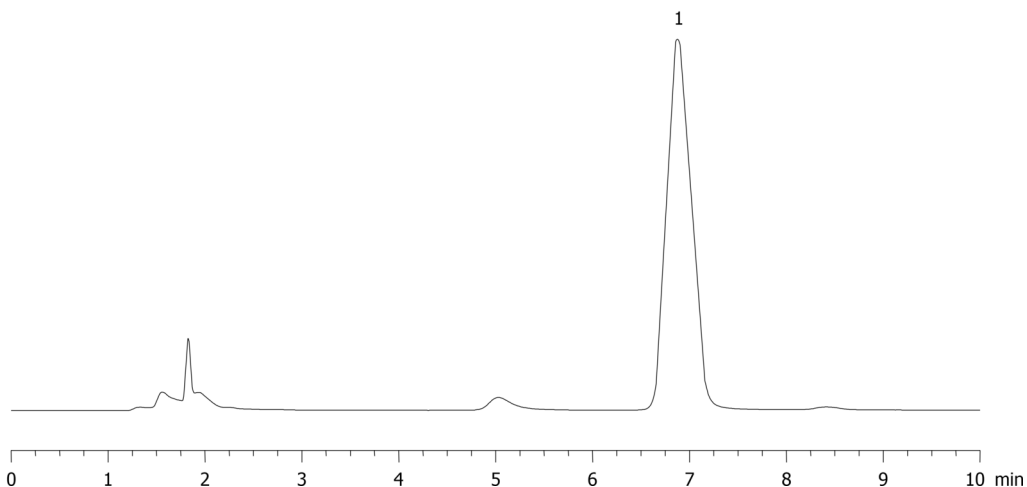
Col. Temp.: 35 °C

Detection: Refractive Index @ 0.0000000000 (35 °C)

Analyst Note: The application was provided by the Fraunhofer IVV in Freising, Germany.
17903



Products used in this application:



ANALYTES:

1 Bronopol

Retention Time: 6.87 min

