

# GC Application

ID No.: 18020

## Propoxyphene from urine by Screen C on a ZB-Drug1

**Column:** Zebtron<sup>™</sup> ZB-Drug-1, GC Cap. Column 10 m x 0.18 mm x 0.18 μm, Ea

**Phase:** Proprietary Drug Phase

**Dimensions:** 10 meters x 0.18 mm x 0.18 μm

**Order No:** 7CD-G023-08

**Oven Profile:** 200 °C to 320 °C @ 25 °C/min

**Carrier Gas:** Constant Flow Helium, 55 cm/sec

**Injection:** Split 10:1 1 μL @ 260°C

**Detection:** Refractive Index (320°C)

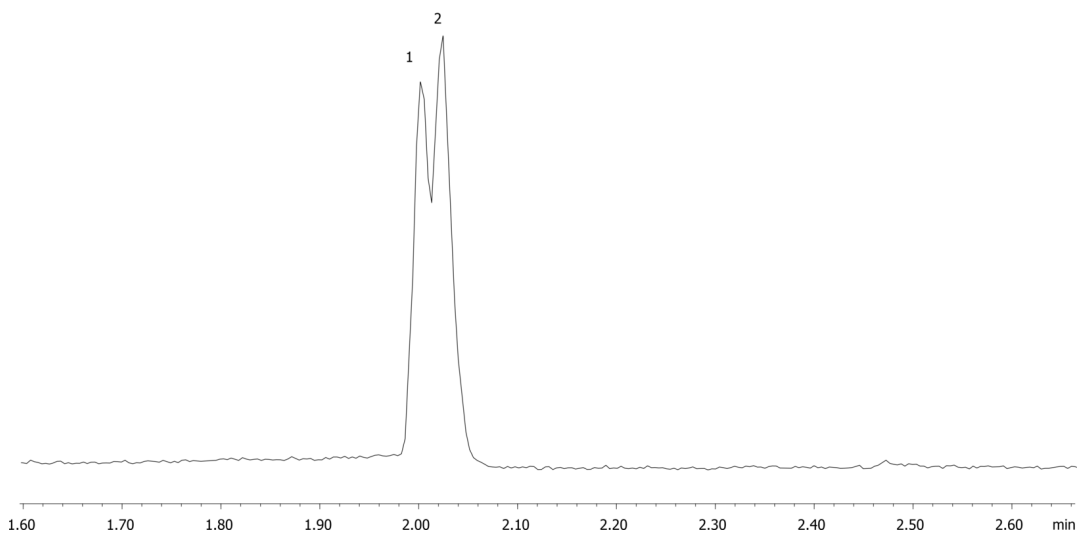
**Analyst Note:** Analytes are 300ng/mL in urine  
Sim ions:  
(Quant ion\*) D11-Propoxyphene (\*64,198,213): Propoxyphene (\*58,193,208)



Products used in this application:



18020



### ANALYTES:

1 Propoxyphene-d11

2 Propoxyphene

