

GC Application

ID No.: 18021

Methadone from urine by Screen C on a ZB-Drug1

Column: Zebtron™ ZB-Drug-1, GC Cap. Column 10 m x 0.18 mm x 0.18 μm, Ea

Phase: Proprietary Drug Phase

Dimensions: 10 meters x 0.18 mm x 0.18 μm

Order No: 7CD-G023-08

Oven Profile: 180 °C to 320 °C @ 25 °C/min for 1 min

Carrier Gas: Constant Flow Helium, 55 cm/sec

Injection: Split 20:1 1 μL @ 280°C

Detection: Refractive Index (320°C)

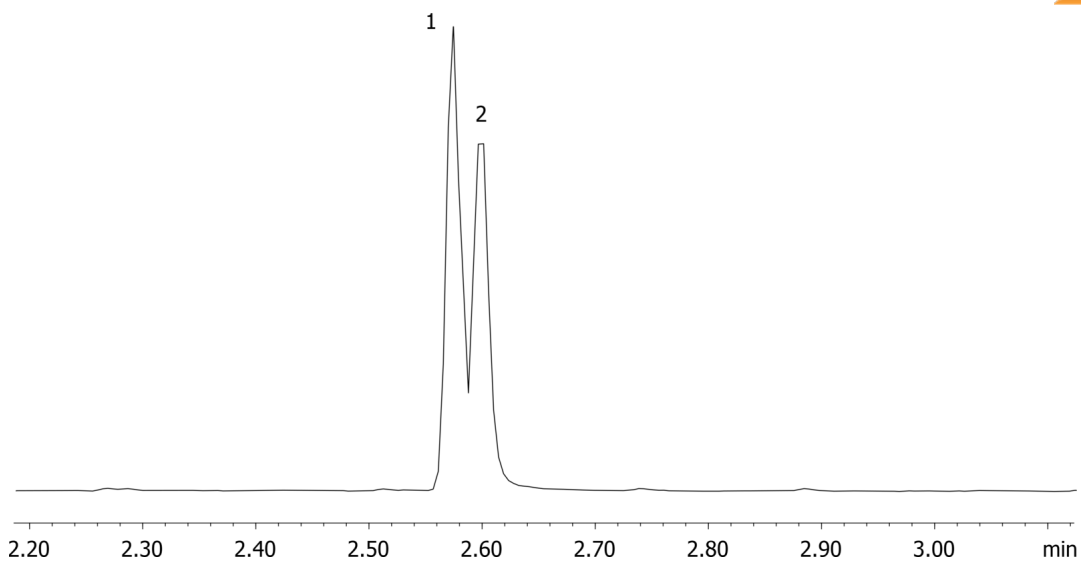
Analyst Note: Analytes are 300ng/mL in urine
Sim ions:
(Quant ion*) D9-Methadone (*78,303): Methadone (*72,294,223)



Products used in this application:



18021



ANALYTES:

- 1 Methadone-d9
- 2 Methadone

