

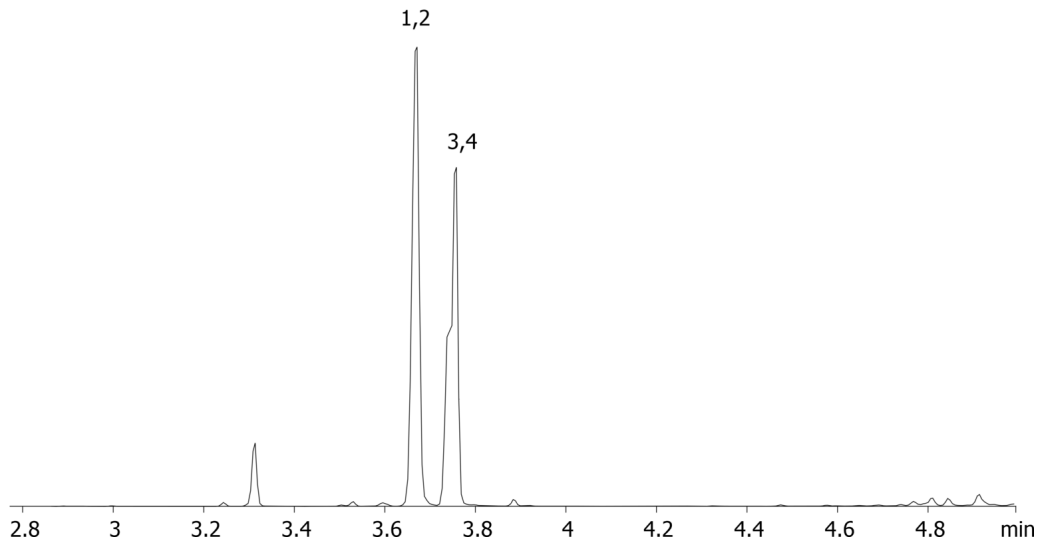
Opiates from urine by Screen C on a ZB-Drug1

Column: Zebtron™ ZB-Drug-1, GC Cap. Column 10 m x 0.18 mm x 0.18 µm, Ea
Phase: Proprietary Drug Phase
Dimensions: 10 meters x 0.18 mm x 0.18 µm
Order No: 7CD-G023-08
Oven Profile:

Carrier Gas: Constant Flow Helium, 0.7 mL/min
Injection: Split 10.0000000000:1 0 µL @ 280°C
Detection: Refractive Index (320°C)
Analyst Note: Analytes are 2000 ng/mL in urine derivatized with BSTFA
Sim ions:
(Quant ion*) D6-Codeine (*377,349): Codeine (*371,343,234): D3-Morphine (*432,417): Morphine (*429,414,401)

**Products used in this application:**

18035

**ANALYTES:**

- 1 Codeine-d6
- 2 Codeine
- 3 Morphine-d3
- 4 Morphine

