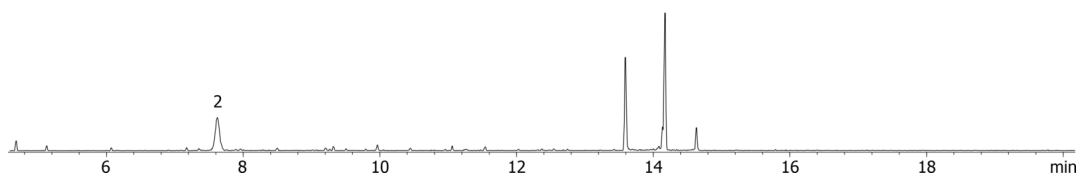
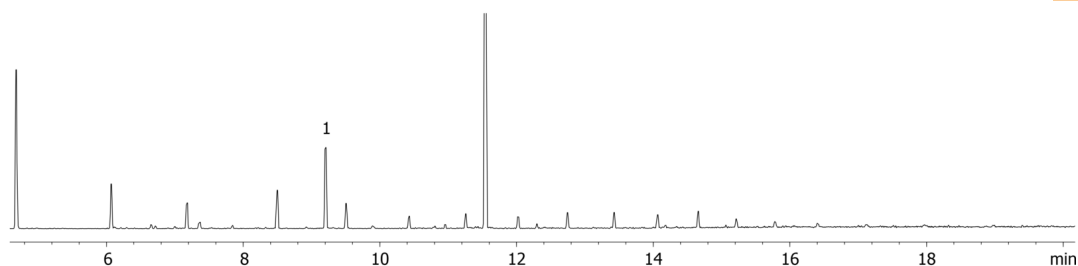


**Melamine Extract from Milk by MSD on ZB-5ms****Column:** Zebron<sup>™</sup> ZB-5MS, GC Cap. Column 30 m x 0.25 mm x 0.25 µm, Ea**Phase:** 5% Phenyl-Arylene 95% Dimethylpolysiloxane**Dimensions:** 30 meters x 0.25 mm x 0.25 µm**Order No:** 7HG-G010-11**Oven Profile:** 100 °C for 0.5 min to 320 °C @ 15 °C/min for 5 min**Carrier Gas:** Constant Flow Helium, 0.9 mL/min**Injection:** Splitless :1 1 µL @ 280°C**Detection:** Refractive Index (320°C)**Analyst Note:** Analytes were extracted from powdered milk and derivatized by BSTFA. Chromatograms are extracted ions of quantitation ions of Melamine (342) and Cyanuric Acid (345).**Products used in this application:**

18197

**ANALYTES:**

- 1 Melamine
- 2 Cyanuric acid

