

HPLC Application

ID No.: 18201

Chloramphenicol - Acceptable Modified Method

Column: Luna® 3 µm C18(2) 100 Å, LC Column 100 x 4.6 mm, Ea

Dimensions: 100 x 4.6 mm ID

Order No: 00D-4251-E0

Elution Type: Isocratic

Eluent A: Water

Eluent B: Methanol

Eluent C: Glacial acetic acid

Gradient Profile:	Step No.	Time (min)	Pct A	Pct B	Pct C
	1	0	54.9	45	0.1

Flow Rate: 1 mL/min

Col. Temp.: ambient

Detection: Refractive Index @ 0.0000000000 (ambient)

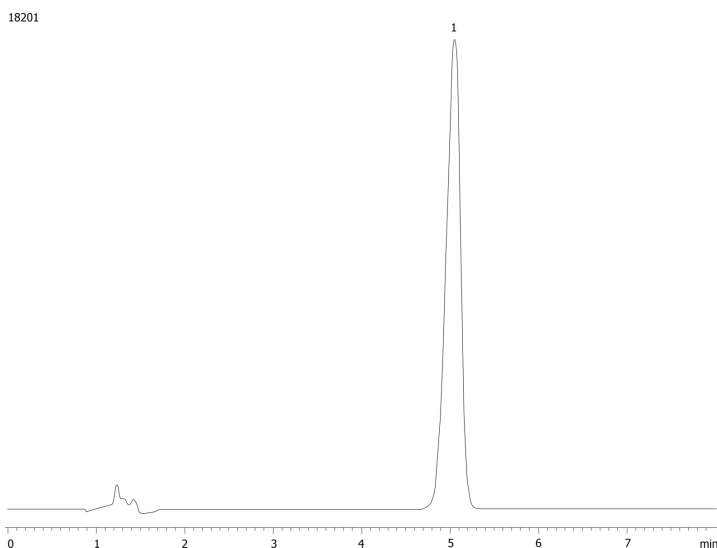
Analyst Note: SecurityGuard™ Guard Cartridge System extends column lifetime.

- SecurityGuard Cartridges, C18 4 x 3.0mm, 10/Pk Part No.: AJ0-4287

- Holder Part No.: KJ0-4282



Products used in this application:



ANALYTES:

1 Chloramphenicol

