

Low Concentration Spike of Baby Formula Using Melamine Screen on ZB-5ms with MSD (SIM)**Column:** ZebtronTM ZB-5MS, GC Cap. Column 30 m x 0.25 mm x 0.25 μ m, Ea**Phase:** 5% Phenyl-Arylene 95% Dimethylpolysiloxane**Dimensions:** 30 meters x 0.25 mm x 0.25 μ m**Order No:** 7HG-G010-11**Oven Profile:** 75 °C for 1 min to 320 °C @ 15 °C/min for 2.67 min.**Carrier Gas:** Constant Flow Helium, 0.9 mL/min**Injection:** Splitless :1 1 μ L @ 280°C**Detection:** Refractive Index (320°C)**Analyst Note:** Low Concentration Spiked Sample of Baby Formula using Scan Mode.

Analytes were extracted via Liquid/Liquid Extraction (LLE) method, centrifuged, filtered, and derivatized with BSTFA in pyridine as per FDA Screening Method.

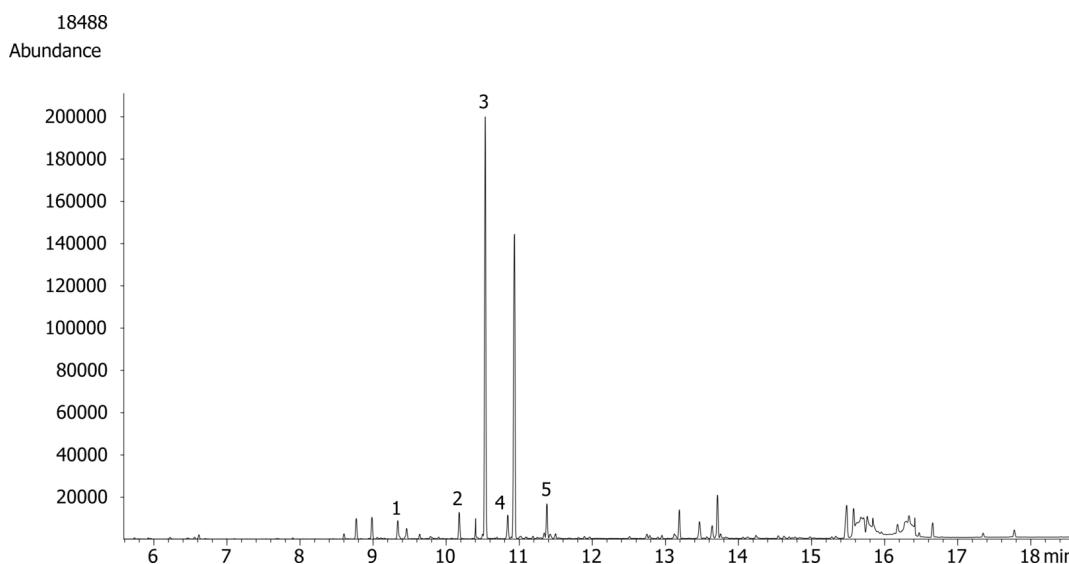
Cyanuric Acid (345*, 330, 188)

Melamine (327*, 342, 197)

Ammelide (344*, 329, 198)

Ammeline (328*, 343, 285)

DACP [IS] (273*, 288, 237)

**Products used in this application:****ANALYTES:**

- 1 Cyanuric acid
- 2 Ammelide
- 3 DACP
- 4 Ammeline
- 5 Melamine

