

# HPLC Application

ID No.: 18555

## Multiclass Antibiotics Screening of Meat for Human Consumption by LC/MS/MS

**Column:** Kinetex<sup>®</sup> 2.6  $\mu$ m C18 100 Å, LC Column 50 x 2.1 mm, Ea

**Dimensions:** 50 x 2.1 mm ID

**Order No:** 00B-4462-AN

**Elution Type:** Gradient

**Eluent A:** Water + 0.1% Formic Acid

**Eluent B:** Methanol + 0.1% Formic Acid

Gradient Profile:	Step No.	Time (min)	Pct A	Pct B
	1	0	98	2
	2	0.3	98	2
	3	7.27	20	80
	4	7.37	1	99
	5	8.27	1	99
	6	13	98	2

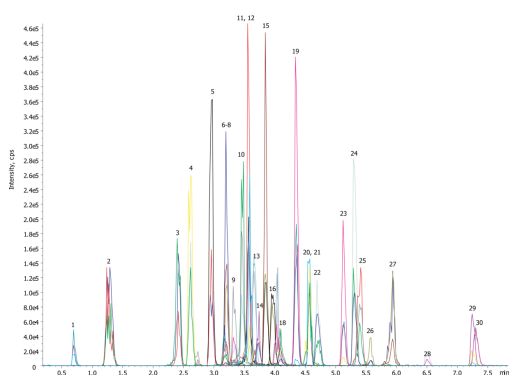
**Flow Rate:** 0.5 mL/min

**Col. Temp.:** ambient

**Detection:** Mass Spectrometer (MS) @ amu (300 °C)



Products used in this application:



## Multiclass Antibiotics Screening of Meat for Human Consumption by LC/MS/MS

### ANALYTES:

- 1 Sulfanilamide
- 2 Amoxicillin
- 3 Lincomycin
- 4 Sulfadiazine
- 5 Sulfathiazole
- 6 Ampicillin
- 7 Thiamphenicol
- 8 Sulfamerazine
- 9 Tetracycline
- 10 Ciprofloxacin
- 11 Enrofloxacin
- 12 Danofloxacin
- 13 Sulfamethazine
- 14 Sarafloxacin
- 15 Sulfamethoxyipyridazine
- 16 Florfenicol
- 17 Spiramycin
- 18 Chlorotetracycline
- 19 Sulfadoxine
- 20 Clindamycin
- 21 Tilmicosin
- 22 Chloramphenicol
- 23 Sulfadimethoxine
- 24 Sulfaquinoloxaline
- 25 Erythromycin
- 26 Tylosin
- 27 Josamycin
- 28 Penicillin G
- 29 Cloxacillin
- 30 Flunixin

