

# HPLC Application

ID No.: 18716

## Extraction of Healthcare Opiates using strata X-C on Kinetex 2.6µm C18 50 x 2.1mm ID by LC/MS

**Column:** Kinetex® 2.6 µm C18 100 Å, LC Column 50 x 2.1 mm, Ea

**Dimensions:** 50 x 2.1 mm ID

**Order No:** 00B-4462-AN

**Elution Type:** Gradient

**Eluent A:** 0.1% Formic acid and 5 mM ammonium acetate in H<sub>2</sub>O

**Eluent B:** 0.1% Formic acid and 5 mM ammonium acetate in 50-50ACN-Methanol

Gradient Profile:	Step No.	Time (min)	Pct A	Pct B
	1	0	95	5
	2	0.24	95	5
	3	3.36	20	80
	4	3.37	5	95
	5	3.68	5	95
	6	3.69	95	5
	7	5.55	95	5

**Flow Rate:** 400 µL/min

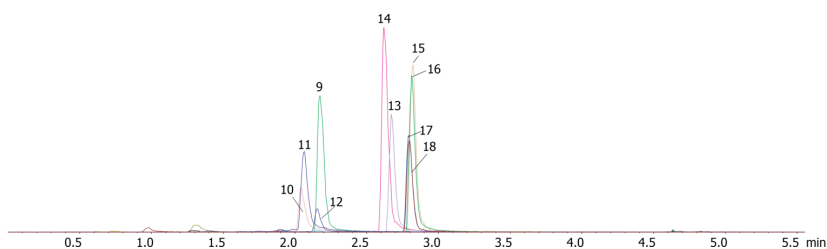
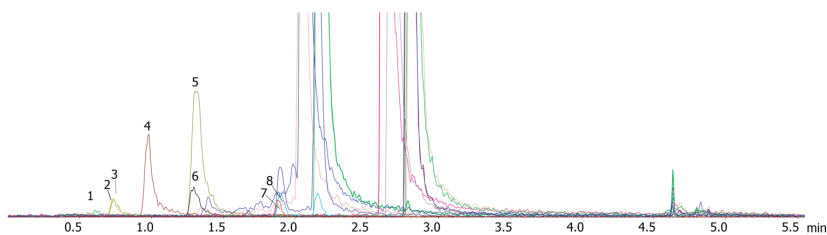
**Col. Temp.:** ambient

**Detection:** Mass Spectrometer (MS) @ amu (ambient)

18716



Products used in this application:



## Extraction of Healthcare Opiates using strata X-C on Kinetex 2.6µm C18 50 x 2.1mm ID by LC/MS

### ANALYTES:

- 1** Normorphine
- 2** Morphine
- 3** Morphine-d3
- 4** Oxymorphone
- 5** Hydromorphone
- 6** Hydromorphone-d6
- 7** Codeine-d6
- 8** Codeine
- 9** O-Desmethyltramadol
- 10** Oxycodone-d6
- 11** Oxycodone
- 12** Hydrocodone
- 13** N-Desmethyltramadol
- 14** Tramadol
- 15** Normeperidine
- 16** Normeperidine-d4
- 17** Meperidine-d4
- 18** Meperidine

