

# HPLC Application

ID No.: 18828

## Atenolol and Related Substances CRS using Kinetex 2.6µm C18 100 x 4.6mm at 01.3ml/min

**Column:** Kinetex® 2.6 µm C18 100 Å, LC Column 100 x 4.6 mm, Ea

**Dimensions:** 100 x 4.6 mm ID

**Order No:** 00D-4462-E0

**Elution Type:** Isocratic

**Eluent A:** EP Mobile Phase

Gradient	Step No.	Time (min)	Pct A
Profile:	1	0	100

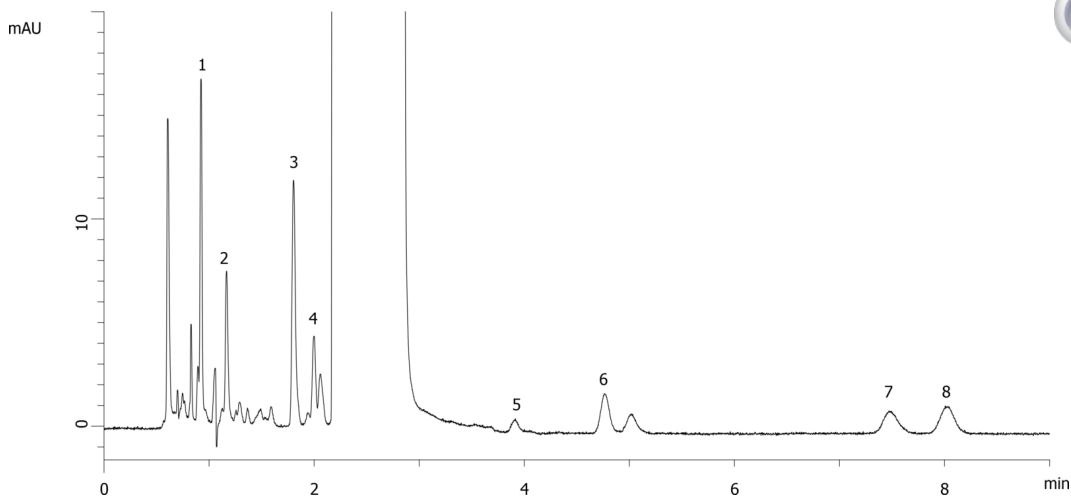
**Flow Rate:** 1.3 mL/min

**Col. Temp.:** ambient

**Detection:** UV-Vis Abs.-Variable Wave.(UV) @ 226 nm (ambient)  
18828



Products used in this application:



### ANALYTES:

- 1 Impurity B
- 2 Impurity A
- 3 Impurity J
- 4 Impurity J
- 5 impurities D and E
- 6 Impurity F
- 7 Impurity G
- 8 Impurity H

